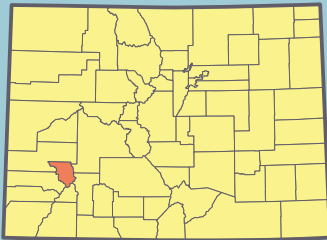


OURAY COUNTY

Tri-County Health Network initiated a survey in Ouray County to:

- Identify the current health care issues and needs in the community
- Understand the differences across communities in Ouray, San Miguel, and the Westend of Montrose
- Develop a plan that targets resources and funding for the identified community needs



Only about

25.3%



of adults report eating enough fruits and vegetables

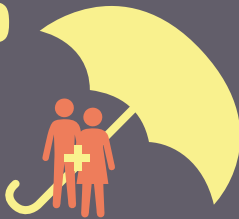
This is an area with

4,462

 Residents

18.5%

Uninsured rate



10.1%

Of the people



the poverty level

4.4 Average number of days (in the past 30 days) experienced by adults of poor physical or mental health that kept them from doing usual activities*

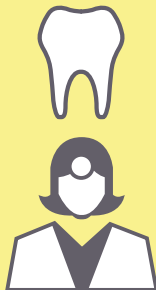


Compared to **3.9** Statewide

OURAY IS DESIGNATED AS A MEDICALLY UNDERSERVED AREA AND A HEALTH PROFESSIONAL SHORTAGE AREA

44%

of adults (aged 18+ years) lost a tooth due to decay or periodontal disease*



Compared to

37.7%

Statewide

10.3%



Of women smoked during the last three months of pregnancy

WHILE MANY IN THE SURVEY INDICATED HAVING INSURANCE, THE MAJOR FACTOR FOR NOT HAVING INSURANCE WAS THE COST.

\$\$\$

* This is Colorado Health Indicators data from Region 10 which includes San Miguel, Ouray, Montrose, Delta, Gunnison and Hinsdale.

KEY FINDINGS IN OURAY COUNTY

INDIVIDUAL CHALLENGES



- Access to specialists
- Access to adult dental care
- Finding health care providers who accept my insurance
- Access to primary care providers

COMMUNITY CHALLENGES



- Access to specialists
- Access to primary care providers
- Transportation
- Access to mental health services

COMMUNITY'S GREATEST BEHAVIORAL HEALTH RELATED NEED

- Substance use including alcohol
- Access to mental health services
- Smoking and tobacco use

BARRIERS TO CARE



- No resources to pay for the service
- Provider does not accept insurance
- Transportation/ health services too far away

WHAT IS NEEDED TO IMPROVE HEALTH IN THE COMMUNITY



- Job opportunities
- Access to specialists
- Wellness activities

“We need better infrastructure such as civic organizations to allow positive interactions in order to create a healthy community.”

NEXT STEPS

TCHNetwork is interested in establishing local work groups to develop a roadmap working towards identifying resources and funding for the needs identified above. These work groups will work collaboratively to develop a roadmap focused on identifying community solutions within the next six months. If you are interested in getting involved in this process, please contact Lynn Borup at info@tchnetwork.org

Tri-County Health Network is a nonprofit entity committed to improving the quality and coordination of health and healthcare services by increasing healthcare access and integrative health services at lower costs.