



**Moab Master Leasing Plan Stakeholder Mapping Workshops
February – March 2014**

Final Report, April 2014

**This report is a synthesis of stakeholder input for consideration by the BLM
for the Moab Master Leasing Plan**

Moab Master Leasing Plan Stakeholder Mapping Workshops

February – March 2014

Final Report, April 2014

EXECUTIVE SUMMARY

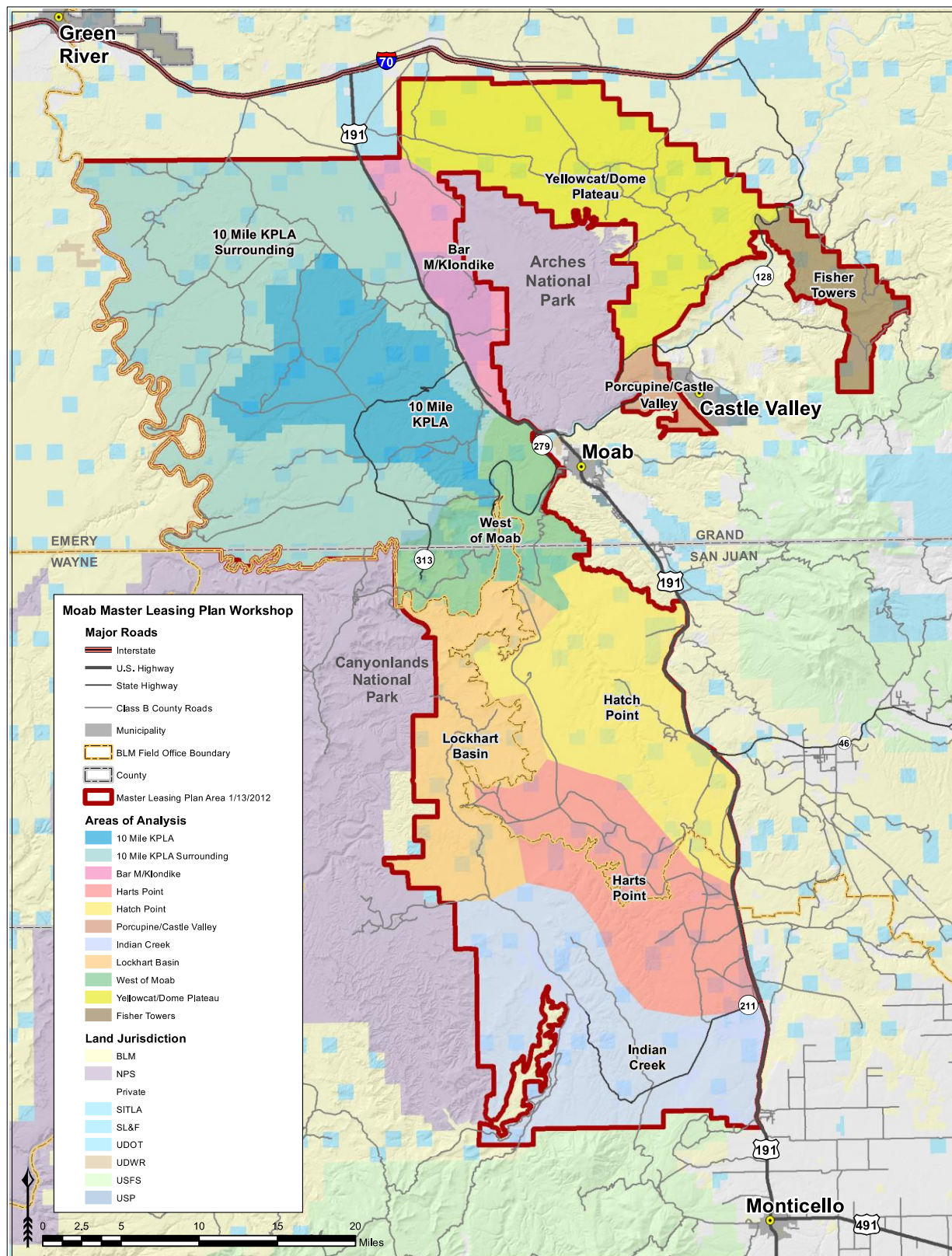
This report summarizes the discussions and themes from the Moab Master Leasing Plan Stakeholder Mapping Workshops held in February and March 2014. Section 1 provides a summary of the Workshop process and the interests of the conservation, recreation and resource extraction stakeholders involved. Section 2 provides a table listing specific stakeholder interests and recommendations within each of 11 “Areas of Analysis” within the Moab Master Leasing Plan area.

TABLE OF CONTENTS

Map of Areas of Analysis for Moab Master Leasing Plan Stakeholder Mapping Workshops	2
Section 1: Workshop Summary	3
Section 2: Stakeholder Interests and Management Suggestions within each area of analysis	7
Fisher Towers	7
Porcupine Rim/Castle Valley	11
Yellow Cat/Dome Plateau	15
Bar M/Klondike	19
10-Mile KPLA	23
Surrounding 10-Mile KPLA	27
West of Moab	32
Hatch Point	36
Lockhart Basin	39
Indian Creek	43
Harts Point	47
Appendix A: Participant List	50
Appendix B: Table of Map Layers for Moab Master Leasing Plan Stakeholder Mapping Workshops	51

Moab Master Leasing Plan Stakeholder Mapping Workshops

Map of Areas of Analysis for Moab Master Leasing Plan Stakeholder Mapping Workshops



Moab Master Leasing Plan Stakeholder Mapping Workshops

SECTION 1: WORKSHOP SUMMARY

I. Context, Purpose and Goals

BLM MLP Process: The Moab Master Leasing Plan (MLP) process is conducted by the U.S. Bureau of Land Management (BLM). The BLM's planning effort will prepare the Moab Master Leasing Plan (MLP), amendments to the Moab and Monticello Resource Management Plans (RMPs), and an Environmental Impact Statement (EIS). The scope of the decisions in the MLP is limited to oil and gas and potash leasing within the Planning Area. The MLP process will provide additional planning and analysis prior to new leasing of oil, gas and potash within the Planning Area. The outcome of the MLP process may result in new mineral leasing stipulations, development constraints, and/or closures to leasing accomplished through amendments to the land use plans (Moab and Monticello RMPs).

Independent Stakeholder Mapping Workshops: The Moab Master Leasing Plan Stakeholder Mapping Workshops were initiated independent of and separate from the BLM's MLP EIS process; the workshops were neither convened nor requested by the BLM. The purpose of the Moab Master Leasing Plan Stakeholder Mapping Workshops was to bring together stakeholders to share and discuss map data layers reflecting their conservation, recreation, and energy development interests within the Moab MLP area. The workshops enabled stakeholders to gain a better understanding of the areas that are most important to each and the specifics behind their interests.

Participation in the Workshops was voluntary and by invitation only; the meetings were designed as a conversation among private sector and NGO interests and the invitation list was intended to be inclusive of private and NGO entities that desired to participate. Agencies, elected officials, and private citizens attended as observers and served as resources to provide or clarify factual and/or technical information. These workshops were hosted by Moab Mayor Dave Sakrison. Julie Shapiro and Matthew Mulica of The Keystone Center provided independent facilitation and note-taking, and Jonathan Knight of Knight Geospatial Services provided GIS and mapping support. **For a complete list of participants please see Appendix A.**

Prior to the meetings, stakeholders provided GIS-based map layers representing their various interests within the MLP area; these layers were synthesized by a GIS technician into a single ARC GIS map platform. **Please see Appendix B for a list of the map layers** and please utilize the link below to access the online map.

<http://www.arcgis.com/home/group.html?id=bf343940b9b144d9ad9e2a628b3691a2>

Participants met in Moab for two 5-hour workshops, the first on February 19 and the second on March 19, 2014, to discuss the map layers that reflected their conservation, recreation, energy and mineral development interests within the Moab MLP area. The two meetings were structured in two primary formats: the first enabled stakeholders to present an overview of their interests through a series of 5-minute presentations by each stakeholder. Stakeholder map layers were projected as they spoke to their interest in various areas throughout the MLP. Following the overview presentations, stakeholders explored smaller geographic areas within the MLP, which for the purposes of the workshop was divided into 11 "Areas of Analysis." Within each area, participants collectively discussed 1) existing RMP stipulations that limit oil, gas and potash development, 2) specific location-based interests concerning resource extraction, potential for future leasing and development, recreation, and conservation, and 3) potential management suggestions. **Please see page 2 (above) for a map of the Areas of Analysis.**

The goal of this process was to identify and ultimately document within this final report the "areas of conflict," "zones of agreement" (if and where they exist), and areas for further research with respect to the recommended locations of oil, gas, and potash development within the Moab MLP. Ultimately, consensus on these issues was not achieved and, instead, an emphasis was ultimately placed on sharing and documenting the range of interests shared by those participating in the process so that participants—and ultimately the BLM through this report—could better understand the various concerns and interests held by each stakeholder.

II. Summary of Stakeholder Interests and Discussion Themes

Throughout the workshop discussions, participants shared information and maps reflecting conservation, resource development and recreation interests along with preferred leasing recommendations and stipulations within the geography of the Moab MLP. These perspectives are summarized below by interest area. In addition, overarching discussion themes are also summarized. The summary reflects the range of perspectives shared during the workshops and as such, no statement or perspective below is intended to imply consensus of the participants. It was also recognized that the participants involved in the workshops do not represent the full range of stakeholders involved with conservation, recreation, and oil, gas and potash interests in the Moab region; participants in the mapping workshops spoke on behalf of their own organizations rather than as representatives of their industries or sectors as a whole.

For a complete synthesis of stakeholder-specific comments provided under each “Area of Analysis,” please see Section 2.

Resource Development

Oil, gas and potash interests generally emphasized the unique value of the geologic deposits within the MLP and the desire to see this area open for leasing. The potash interests also spoke to the need to develop the world-class and rare potash deposit in order to supply agricultural fertilizer and assist with feeding the growing population nationally and internationally. The resource development participants discussed interests in responsibly developing the resources in economically viable and profitable ways while maintaining good relationships within the community and meeting or exceeding existing federal and state requirements regarding timing of activities and stipulations for protection of environmental interests. Some expressed that the MLP process is an unnecessary process and redundant NEPA layer.

Uncertainty of outcomes of the leasing process was also noted as a concern; one participant asserted that his company has spent millions of dollars on leases in the area, some of which have never been allowed and that this is a difficult business model as they are looking for more predictability regarding their investments. There was also emphasis that rights under valid leases cannot be taken away through the MLP process. Participants from the potash industry also noted that the leasing process for potash is different than for oil and gas, requiring one of two processes: 1) in Known Potash Leasing Areas (KPLA)s, the area is subject to competitive leasing; 2) in areas that are not KPLAs, the process requires a prospecting permit (obtained through a prospecting permit application process) to establish proof of an economically viable deposit prior to leasing.

Participants noted that the map layers that the resource development companies submitted often encompassed overly broad acreage and that in reality the scope of their developments would be more discrete. This is due to the competitive nature of their respective industries and the fact that defining their more discrete areas of interest would drive up prices on the parcels and reveal proprietary information. Participants also stated that although there are big blocks of oil and gas areas available for leasing, it is likely that only about 30% of that land will be deemed economically viable after prospecting and only a small portion of land within the MLP is estimated to be disturbed by oil and gas exploration and development over the next 15 years. Industry participants also stated that surface evaporation ponds are the commonly used mechanism for developing the potash resources in this geographic area.

Moab Master Leasing Plan Stakeholder Mapping Workshops

Conservation

Conservation interests generally fell into the following categories: species and habitat protection; wilderness preservation; viewsheds and soundscapes; and water source protection.

Conservation organizations often cited wildlife, habitat, biodiversity, rare plants and natural communities as reasons for limiting and/or assigning additional stipulations for oil, gas and potash development within the Moab MLP. There are many species that live within the MLP area including several threatened or endangered species that are protected under the Endangered Species Act (ESA) as well as other species that are not protected under ESA but are of conservation interest. Species discussed during the workshops, including but not limited to ESA-protected species, include the Gunnison prairie dog, Gunnison sage grouse, greater sage grouse, white tail prairie dog, black footed ferret, ferruginous hawk, and burrowing owl. Participants raised concerns regarding the impacts of development on wildlife migration corridors, the potential for habitat fragmentation, and the general encroachment of human activities on habitat due to the potential increases of roads and drilling pads required by resource development activities. Conservation representatives also cited their interests in protecting rare plants, fragile and easily erodible soils, and natural communities and steering development away from high ecologically valuable land while reducing conflicts with development.

Participants raised concerns regarding the incompatibility of development in areas that have wilderness characteristics and/or that have been proposed as Wilderness. Generally speaking, wilderness supporters advocated closing these areas to new oil, gas and potash leasing and development.

Another often cited conservation concern within the Moab MLP area is the protection of viewsheds and soundscapes. The effect of development on viewsheds from the National Parks as well as the roads leading into the parks was a concern. Dark night skies on the Colorado Plateau and natural quiet were also raised as important interests, and there were concerns related to the potential for noise pollution and impacts to air quality from oil, gas and potash development.

Conservation interests also often cited the need and interest to protect the region's water quality, quantity and riparian areas for human, plant and animals communities. Many specific regions of the MLP area have been designated as state-approved drinking water source protection areas. Stakeholders noted that protection of land uses that depend on water (such as residential and agriculture) are important and that the impacts on water quality and quantity in the region could be negatively impacted by the processes used to extract oil, gas and potash.

Finally, conservation interests also discussed the desire for analysis of the cumulative impacts of development within the MLP, including but not limited to air quality. Some participants also noted that there is overlap between conservation and recreation interests.

Recreation

Recreation in the Moab area includes a wide range of both backcountry and front-country activities including but not limited to: base jumping, canyoneering, equestrian activities, flightseeing, hiking, hot air ballooning, hunting, mountain biking, OHV'ing, rafting, and rock climbing. Recreation interests often overlap with conservation interests, however some recreation interests use motors and do not support lands being designated as Wilderness as these lands do not allow motors or mechanized travel of any kind.

Participants from the recreation sector emphasized their interest in preserving the right and/or ability to recreate on and enjoy the area; concerns related to the potential impacts of resource development activities varied depending on the type of recreational use. Some participants from the recreation sector expressed that there is low conflict

Moab Master Leasing Plan Stakeholder Mapping Workshops

between energy and mineral development and certain recreational uses such as OHV'ing. Other participants from the recreation sector cited many of the same concerns as the conservation interests with respect to the impacts of oil, gas and potash development; these concerns include impacts to viewsheds, noise, traffic on roads, withdrawals from rivers, and impacts to specific recreation sites and trails among others.

Recreation interests spoke to the significant positive economic impacts to the region and jobs created as people visit the areas for recreation and leisure activities. A stakeholder noted that although they add substantially to the economy, they do not enjoy the same rights under the state and federal laws as the conservation and resource extraction interests.

Participants also spoke to the concern of keeping areas of high-density recreational use intact while also maintaining a product mix of backcountry and front-country offerings. Participants noted that some uses, such as rock climbing, are site-specific and cannot be moved, while the impacts of development on other recreational uses may have a greater potential for mitigation. Participants noted that the Moab MLP planning area hosts a unique diversity and concentration of nationally significant recreation opportunities that also consistently attract a large number of international visitors. Recreation participants have proposed specific Recreation Management Areas for a number of locations within the MLP area that they believe should receive a higher degree of protection from impacts related to resource extraction.

Overarching Discussion Themes

The outcome of the workshops was better understanding of the various conservation, recreation, and oil, gas and potash interests. The discussion at both meetings was respectful and the stakeholders shared information and asked questions to better understand each others' interests and values. Discussions often reflected on compatibility and incompatibility of the various multiple uses valued by stakeholders. There were a range of perspectives on the topic of multiple use and compatibility of interests. These ranged from opinions that some or all areas of interest in the MLP planning are compatible with oil, gas, and potash development to views that development is rarely, if at all, compatible with other recreational and conservation interests.

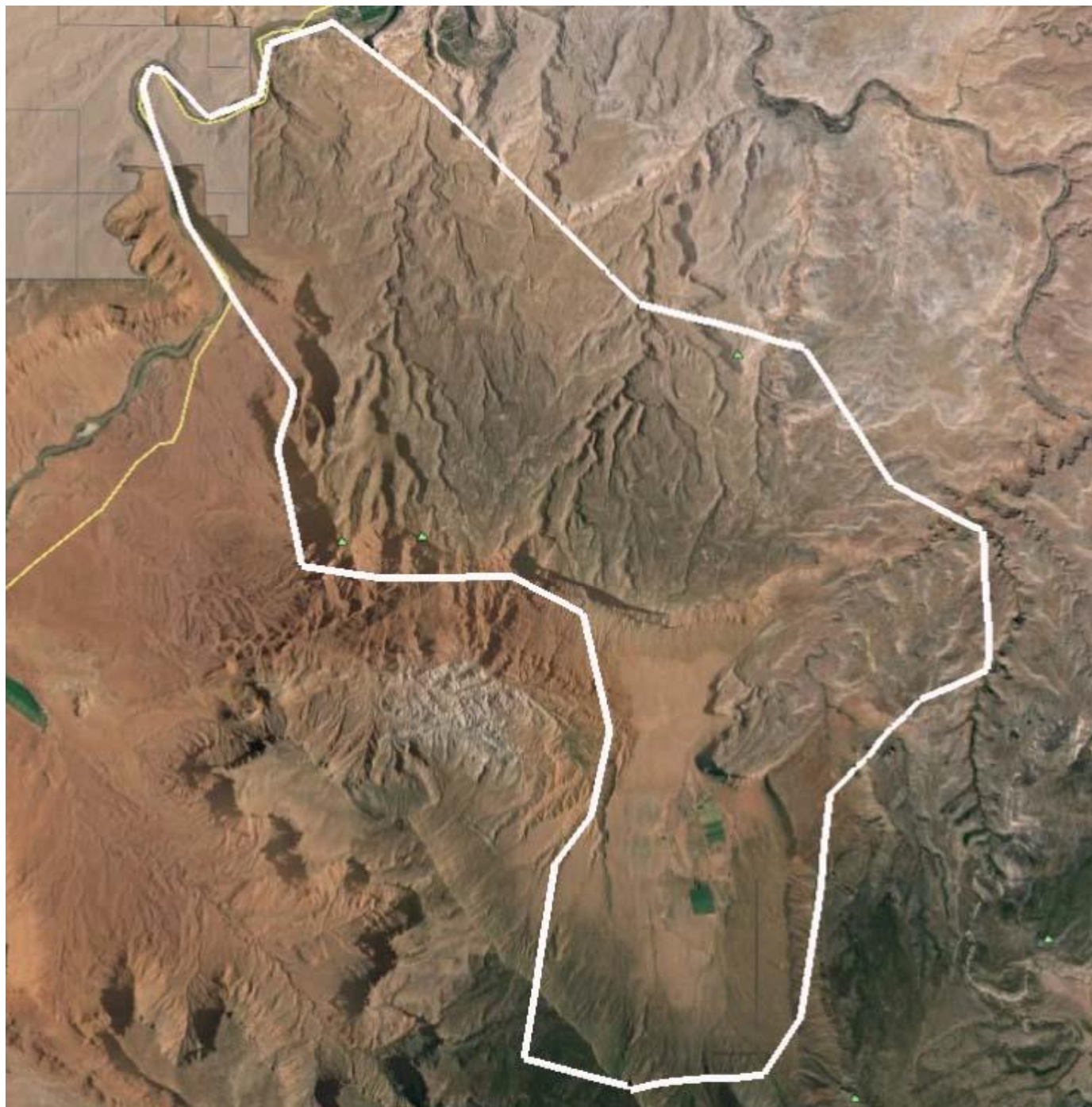
It was noted that the recreation and conservation stakeholders can often specifically identify the areas they'd like protected and provide this information to extraction companies even if the oil, gas and potash stakeholders cannot list their specific areas of interest due to the proprietary nature of this information. Some participants expressed that this information sharing will hopefully allow the extraction industries to understand the areas where they can expect higher or lower levels of conflict.

In their final discussion of the workshops, participants shared a range of concluding perspectives and potential recommendations to the BLM regarding the need to utilize good data in the MLP, to find opportunities for compatibility where possible, to focus analysis on areas of high potential for conflict, and to complete the MLP efficiently so that stakeholders can have more certainty moving forward. Participants also expressed the need to provide transparency in decisions, to develop new and better data if needed, and to update processes (where appropriate) to reflect and incorporate new data and information.

Finally, stakeholders expressed the hope that the BLM would utilize the data and information that was brought forward – and categorized both within the mapping layers and the compiled stakeholder comments – as the agency develops its alternatives for each of the 11 Areas of Analysis within the Moab MLP area.

SECTION 2: STAKEHOLDER INTERESTS AND MANAGEMENT SUGGESTIONS WITHIN EACH AREA OF ANALYSIS

Fisher Towers Area of Analysis



Moab Master Leasing Plan Stakeholder Mapping Workshops: Stakeholder Comments on 'Areas of Analysis'

FISHER TOWERS

Specific Location	Specific Interest	Level of Interest	Current RMP	Management Suggestions
<i>Resource Extraction</i>				
<i>Fidelity Exploration & Production Company</i>				
whole area	Development	Low Medium		Although not high-interest areas at this time for Fidelity, we do support the nomination and lease sale process for unleased areas, an MLP process that supports multiple-use, and a NEPA process that will not strand or limit existing state and federal leases. Oil & Gas industry and Potash partners may currently hold or pursue in the future.
<i>Rockies Standard Oil Company</i>				
whole area	oil and gas development	Medium	Multiple - varies by area	
<i>James Kohler - Potash Industry</i>				
entire MLP area	potash development			The potash leasing procedures differ significantly from oil and gas, and the potash leasing rules require additional NEPA review beyond the RMP before leasing can proceed. Consequently, it is recommended that BLM not "close" areas to potash leasing through this MLP effort. Instead, the specific conflicts with other resource values (recreation, water, wildlife habitat, etc.) can be properly evaluated with a specific proposal before a decision is made to lease or not lease.
<i>Recreation</i>				
<i>Trail Mix</i>				
whole area	Hiking and Climbing	Extremely High!!! at Fisher Towers.	Hiking Focus Areas in BLM RMP	
<i>PLS: Utah Outdoor Business Network</i>				
Fisher Towers	Climbing, Filming	High	NSO	Close to leasing
Kokopelli Trail	Mtn Biking, OHV	High	Open, Special, NSO	Close to leasing
Top of the World	Mtn Biking, OHV, BASE, Climbing	High	Open	Close to leasing
Richardson Amphitheater	Climbing + Hiking	Low	NSO; BLM Hiking Focus Area	Maintain NSO Restrictions
SWM	Climbing	High	NSO	Close to leasing
Pole Canyon Rim	OHV / Mtn Bike	High to Moderate	Special	Maintain NSO Restrictions

Moab Master Leasing Plan Stakeholder Mapping Workshops: Stakeholder Comments on 'Areas of Analysis'

FISHER TOWERS

Specific Location	Specific Interest	Level of Interest	Current RMP	Management Suggestions
whole area	Concern about industrial infrastructure and transportation issues in the Colorado River Corridor	High	Hiking Focus Areas in BLM RMP	Close portions to leasing
<i>Conservation</i>				
<i>National Parks Conservation Association</i>				
whole area	conservation	medium	special/standard	site development out of park viewshed; ensure that impacts to night skies are mitigated
<i>Grand Canyon Trust</i>				
Mary Jane Canyon Proposed Wilderness Unit east and south of the Fisher Valley	Conservation /Recreation	High		NSO or no leasing for areas proposed for wilderness in the Grand Canyon Trust's Forest Wilderness Proposal.
All locations that intersect with the Utah Wilderness Coalition's "America's Redrock Wilderness Act" - a bill in Congress, H.R. 1630, S. 769	Conservation /Recreation	High		Closed to leasing
<i>Canyonlands Watershed Council</i>				
whole area	Water, Film Industry, Recreation	High		NSO for film, hiking, and climbing view sheds No leasing at all around private ranch. Very important area for film industry Riparian zones as well as intermittent and perennial water sources are present and should be protected
<i>The Wilderness Society</i>				
Fisher Towers, Beaver Creek Proposed Wilderness Units in America's Red Rock Wilderness Act	Conservation/ recreation/ wilderness	High	Varies but majority are open to leasing under standard terms or with timing limitations. Smaller percentage is NSO and very small percentage is closed to leasing.	Closed to leasing and additional protection in terms of visual resource management class I or II. Note that Wilderness Study Areas (part of the bill) are already required to be closed to future leasing and assigned visual resource management class I. Since the current RMP was finalized, the BLM has been operating under new guidance on identifying and managing lands with wilderness characteristics, which we think is an important change and part of the options the BLM has going forward to acknowledge the importance of these lands.

Moab Master Leasing Plan Stakeholder Mapping Workshops: Stakeholder Comments on 'Areas of Analysis'

FISHER TOWERS

Specific Location	Specific Interest	Level of Interest	Current RMP	Management Suggestions
<i>Southern Utah Wilderness Alliance</i>				
Areas with Wilderness Characteristics Not being managed as such	Conservation/ Recreation	High	some NSO in canyon bottoms but most are standard/ special	Should be closed to leasing.
Fisher Towers, Beaver Creek	Conservation/ Recreation	High	BLM Managed Wilderness Character Areas	Currently largely closed to leasing or NSO. Should be all closed to leasing.
Fisher Towers, Beaver Creek Proposed Wilderness Units in America's Red Rock Wilderness Act	Conservation /Recreation	High		Closed to leasing
<i>Sierra Club</i>				
whole area	Conservation	High		The Sierra Club considers the entire area a region with significant conservation interests. Our policy is that oil should remain in the ground and as a society we should be looking at alternative sources of energy. We are not interested in identifying areas with low conservation interest and thus potential areas for oil and gas development.
<i>Additional Comments</i>				
T23S R24E sec 19	conservation of a few occurrences of rare plants	medium		avoid, closed
Colorado River Corridor T23S R24E portions of sections 13,14,18,19,24,23	Conservation of riverine system and associated natural communities including critical habitat for 4 endangered CO fish species and 3 sensitive fish species.	high		avoid, closed

Porcupine Rim/Castle Valley Area of Analysis



Moab Master Leasing Plan Stakeholder Mapping Workshops: Stakeholder Comments on 'Areas of Analysis'
PORCUPINE RIM/CASTLE VALLEY

Specific Location	Specific Interest	Level of Interest	Current RMP	Management Suggestions
<i>Resource Extraction</i>				
<i>Fidelity Exploration & Production Company</i>				
whole area	Development	Low/ Medium		Although not high-interest areas at this time for Fidelity, we do support the nomination and lease sale process for unleased areas, an MLP process that supports multiple-use, and a NEPA process that will not strand or limit existing state and federal leases. Oil & Gas industry and Potash partners may currently hold or pursue in the future.
<i>Rockies Standard Oil Company</i>				
whole area	oil and gas development	Medium	Multiple - varies by area	
<i>James Kohler - Potash Industry</i>				
entire MLP area	potash development			The potash leasing procedures differ significantly from oil and gas, and the potash leasing rules require additional NEPA review beyond the RMP before leasing can proceed. Consequently, it is recommended that BLM not "close" areas to potash leasing through this MLP effort. Instead, the specific conflicts with other resource values (recreation, water, wildlife habitat, etc.) can be properly evaluated with a specific proposal before a decision is made to lease or not lease.
<i>Recreation</i>				
<i>Trail Mix</i>				
---entire area including Whole Enchilada, Porcupine Rim, LPS	Extremely popular Mt. Bike Trails Hiking, climbing	High!!!		
<i>Canyonlands Watershed Council</i>				
128 Bike Path Multi-Million dollar bike path was built to serve as the exodus of this trail system.	Mtn and Road Biking, Hiking	High		remain closed
Whole Enchilada, Porcupine Rim	Extremely important mountain biking trail for economic reasons.	High		Development should not visually or in any other way impact a very important mountain biking resource along the rim. The road should not be "improved" to allow access for development.
<i>PLS: Utah Outdoor Business Network</i>				
Porcupine Rim Trail	Mtn Biking	High	Special, CSU, Closed	Close to leasing
Castle Valley	Climbing	High	Closed	Not within MLP area but there are significant viewshed concerns. Designate as NSO areas within viewshed.
Big Bend	Climbing	High	NSO	Not within MLP area but there are significant viewshed concerns. Designate as NSO areas within viewshed.
River Road	Climbing	High	NSO	Close to leasing
Drinks Canyon	Climbing	Medium	NSO	Close to leasing
Moab Daily River Section	Boating	High	Closed/NSO	Close to leasing
River Road	Road Biking, Running	High	NSO	Close to leasing
Castle Creek	equestrian	High	NSO	Close to leasing

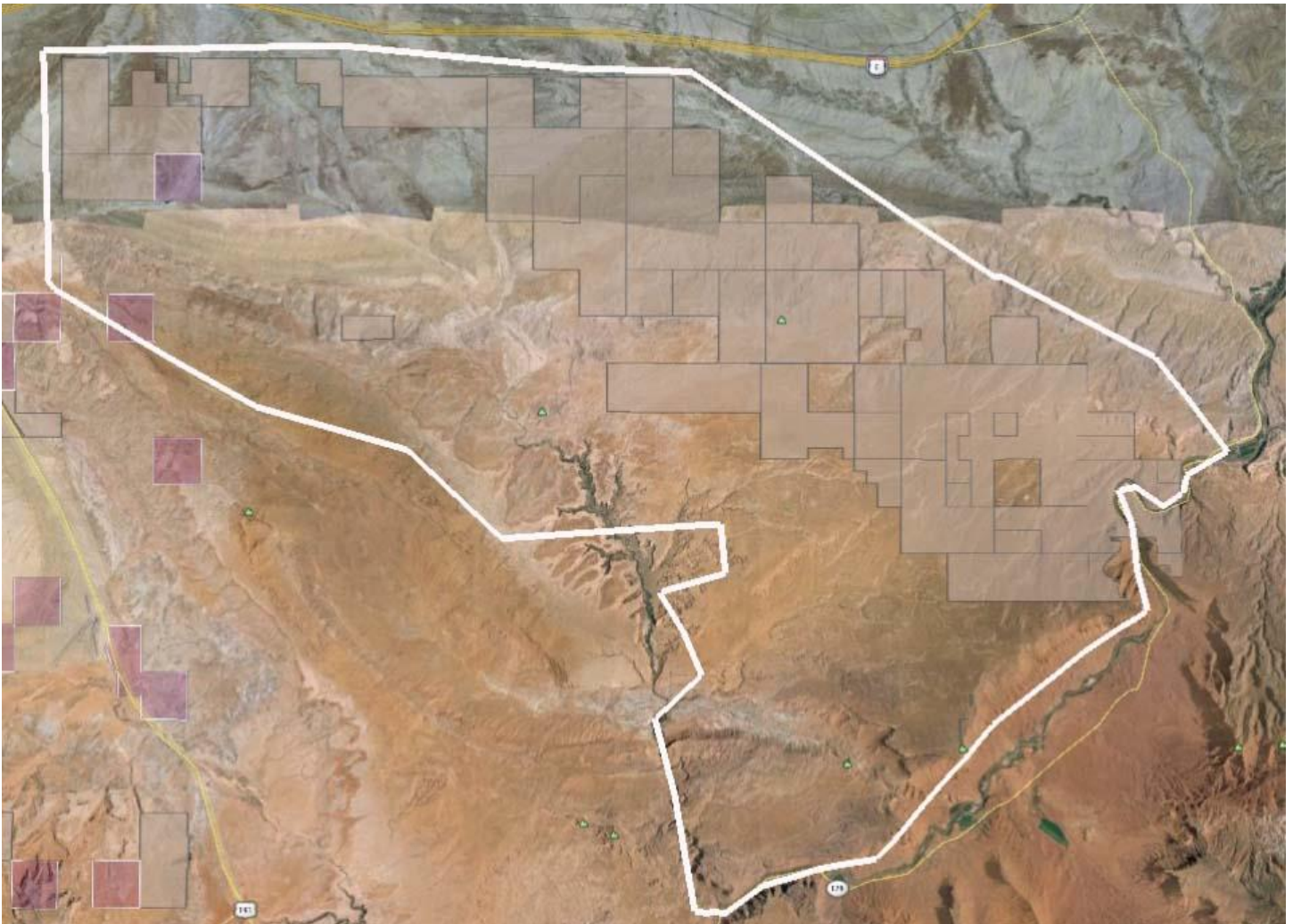
Moab Master Leasing Plan Stakeholder Mapping Workshops: Stakeholder Comments on 'Areas of Analysis'
PORCUPINE RIM/CASTLE VALLEY

Specific Location	Specific Interest	Level of Interest	Current RMP	Management Suggestions
<i>Conservation</i>				
<i>National Parks Conservation Association</i>				
whole area	conservation	high	NSO along river/Special	NSO and mitigation of impacts on night skies. Nearly the entire area is within Arches National Park viewshed and portions of Canyonlands NP viewshed.
<i>Grand Canyon Trust</i>				
All locations that intersect with the Utah Wilderness Coalition's "America's Redrock Wilderness Act" - a bill in Congress, H.R. 1630, S. 769	Conservation /Recreation	High		NSO or no leasing for the following proposed wilderness units
<i>Canyonlands Watershed Council</i>				
whole area	Water, Recreation	High		Porcupine rim and associated protection zones should be closed to development that interferes with water source protection for Castle Valley residents. Riparian zones as well as intermittent and perennial water sources are present and should be protected
Town of Castle Valley	water	High		Several hundred people in Castle Valley rely on private wells for drinking water which, because private, have no official source protection zones.
Red Cliff and Day Star Ranches	water	High		There are two drinking water source protection areas which affect this area. Red Cliff's and Day Star ranches. Those specific areas should be closed.
<i>The Wilderness Society</i>				
Mary Jane Canyon, Porcupine Rim Proposed Wilderness Units in America's Red Rock Wilderness Act	Conservation/ recreation/ wilderness	High	Varies but majority are open to leasing under standard terms or with timing limitations. Smaller percentage is NSO and very small percentage is closed to leasing.	Closed to leasing and additional protection in terms of visual resource management class I or II. Note that Wilderness Study Areas (part of the bill) are already required to be closed to future leasing and assigned visual resource management class I. Since the current RMP was finalized, the BLM has been operating under new guidance on identifying and managing lands with wilderness characteristics, which we think is an important change and part of the options the BLM has going forward to acknowledge the importance of these lands.
<i>Southern Utah Wilderness Alliance</i>				
Areas with Wilderness Characteristics Not being managed as such	Conservation/ Recreation	High	some NSO in canyon bottoms but most are standard/ special	Should be closed to leasing.
Mary Jane Canyon, Porcupine Rim Proposed Wilderness Units in America's Red Rock Wilderness Act	Conservation /Recreation	High		Closed to leasing

Moab Master Leasing Plan Stakeholder Mapping Workshops: Stakeholder Comments on 'Areas of Analysis'
PORCUPINE RIM/CASTLE VALLEY

Specific Location	Specific Interest	Level of Interest	Current RMP	Management Suggestions
Mary Jane Canyon	Conservation/ Recreation	High	BLM Managed Wilderness Character Areas	Currently largely closed to leasing or NSO. Should be all closed to leasing.
<i>Sierra Club</i>				
whole area	Conservation	High		The Sierra Club considers the entire area a region with significant conservation interests. Our policy is that oil should remain in the ground and as a society we should be looking at alternative sources of energy. We are not interested in identifying areas with low conservation interest and thus potential areas for oil and gas development.
<i>Additional Comments</i>				
T25S R22E portions of sec 4,5,8,9,10,15,16	Conservation of riverine system and associated natural communities	high		avoid, closed
T24S R22E portions of sec 27,28,33,34	Conservation of riverine system and associated natural communities	high		avoid, closed
T24S R23E sec 20,21, 27-30, 34-36 and T25S R23E sec 3-6 9-11 (although outside of ML boundaries appear to be in area of analysis boundaries	Conservation of high concentrations of BLM and State of Utah sensitive, T&E plant species	high		avoid, closed

Yellowcat/Dome Plateau Area of Analysis



Moab Master Leasing Plan Stakeholder Mapping Workshops: Stakeholder Comments on 'Areas of Analysis'

YELLOWCAT/ DOME PLATEAU

Specific Location	Specific Interest	Level of Interest	Current RMP	Management Suggestions
<i>Resource Extraction</i>				
<i>Titan Energy Resources</i>				
whole area	Development of oil and gas	mod interest -- high potential	Many areas currently available for oil and gas leasing with numerous stipulations (timing, soils, controlled surf use, etc.)	Keep available for leasing with no change in current requirements
<i>Fidelity Exploration & Production Company</i>				
whole area	Development	Low/ Medium		Although not high-interest areas at this time for Fidelity, we do support the nomination and lease sale process for unleased areas, an MLP process that supports multiple-use, and a NEPA process that will not strand or limit existing state and federal leases Oil & Gas industry and Potash partners may currently hold or pursue in the future.
<i>Rockies Standard Oil Company</i>				
whole area	oil and gas development	High	Multiple - varies by area	
<i>James Kohler - Potash Industry</i>				
entire MLP area	potash development			The potash leasing procedures differ significantly from oil and gas, and the potash leasing rules require additional NEPA review beyond the RMP before leasing can proceed. Consequently, it is recommended that BLM not "close" areas to potash leasing through this MLP effort. Instead, the specific conflicts with other resource values (recreation, water, wildlife habitat, etc.) can be properly evaluated with a specific proposal before a decision is made to lease or not lease.
<i>Recreation</i>				
<i>Trail Mix</i>				
whole area	Hiking - Jeeping	Low		
<i>PLS: Utah Outdoor Business Network</i>				
Dewey Bridge	Climbing	Medium	CSU	Maintain CSU or expand to NSO
Winter Camp	Canyoneering	Medium	Open	Designate CSU or NSO
Yellow Cat Mesa	OHV	Medium	Open	Designate CSU
Dome Plateau	OHV	Medium	CSU	Maintain CSU
Sunshine Wall	Climbing	Medium	CSU	Maintain CSU and expand to NSO
Long Valley	OHV	Medium	CSU	Maintain CSU and expand to NSO
Yellow Cat	Hot Air Balloon	Medium	Open, CSU	Maintain CSU
<i>Conservation</i>				
<i>National Parks Conservation Association</i>				
MLP Planning area adjacent to northeastern boundary of Arches NP	conservation	high	Special	NSO where overlap with Arches NP viewshed as well as consideration of soundscapes analysis being completed by the NPS. Special consideration of siting and mitigation of night skies impacts.
Poison Strip & The Highlands	conservation	high	Standard	NSO or special stipulations near The Poison Strip & The Highlands to ensure siting of development out of Arches NP viewshed & mitigation of impacts to night skies & soundscapes

Moab Master Leasing Plan Stakeholder Mapping Workshops: Stakeholder Comments on 'Areas of Analysis'

YELLOWCAT/ DOME PLATEAU

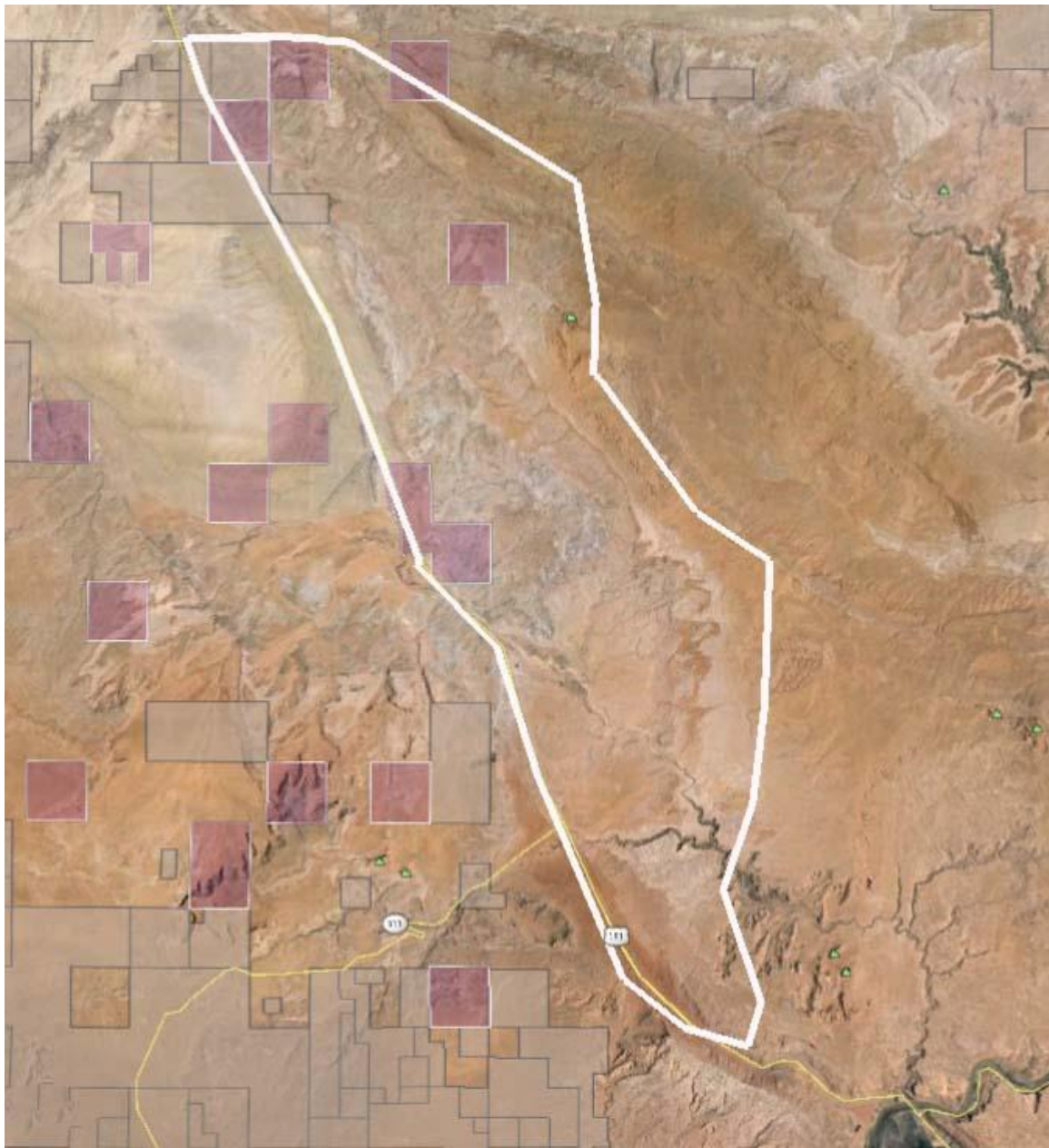
Specific Location	Specific Interest	Level of Interest	Current RMP	Management Suggestions
Whipsaw Flat/north of Little Valley/Yellowcat Road area	conservation	med-high	Special	NSO or special stipulations to ensure siting development out of Arches NP viewshed and mitigation of impacts to night skies & soundscapes
<i>Grand Canyon Trust</i>				
All locations that intersect with the Utah Wilderness Coalition's "America's Redrock Wilderness Act" - a bill in Congress, H.R. 1630, S. 769	Conservation /Recreation	High		NSO or no leasing for the following proposed wilderness units
<i>Canyonlands Watershed Council</i>				
whole area	Water	High		Part of Arches Devil's Garden campground water source protection area is within the MLP area. This portion should be closed. Riparian zones as well as intermittent and perennial water sources are present and should be protected
<i>The Wilderness Society</i>				
Yellow Bird, Dome Plateau Proposed Wilderness Units in America's Red Rock Wilderness Act	Conservation/ recreation/ wilderness	High	Varies but majority are open to leasing under standard terms or with timing limitations. Smaller percentage is NSO and very small percentage is closed to leasing.	Closed to leasing and additional protection in terms of visual resource management class I or II. Note that Wilderness Study Areas (part of the bill) are already required to be closed to future leasing and assigned visual resource management class I. Since the current RMP was finalized, the BLM has been operating under new guidance on identifying and managing lands with wilderness characteristics, which we think is an important change and part of the options the BLM has going forward to acknowledge the importance of these lands.
<i>Southern Utah Wilderness Alliance</i>				
Areas with Wilderness Characteristics Not being managed as such	Conservation/ Recreation	High	some NSO in canyon bottoms but most are standard/ special	Should be closed to leasing.
Yellow Bird, Dome Plateau Proposed Wilderness Units in America's Red Rock Wilderness Act	Conservation /Recreation	High		Closed to leasing
<i>Sierra Club</i>				
whole area	Conservation	High		The Sierra Club considers the entire area a region with significant conservation interests. Our policy is that oil should remain in the ground and as a society we should be looking at alternative sources of energy. We are not interested in identifying areas with low conservation interest and thus potential areas for oil and gas development.
<i>Additional Comments</i>				
T22S R20E sections 1-13 and 33	Conservation of high concentrations of rare plants and animals either listed and T& E or on BLM and state of Utah sensitive	high		additional surveys esp for rare plants, then avoid locations and habitat, stipulations for sensitive wildlife species.

Moab Master Leasing Plan Stakeholder Mapping Workshops: Stakeholder Comments on 'Areas of Analysis'

YELLOWCAT/ DOME PLATEAU

Specific Location	Specific Interest	Level of Interest	Current RMP	Management Suggestions
T22S R21E sections 1-6 18 and 17	Conservation of high concentrations of BLM and State of Utah sensitive species	medium		avoid and/or stipulations for sensitive species.
T23S R23E portions of sections 13,14,23,25,26	Conservation of riverine system and associated natural communities including critical habitat for 4 endangered Colorado fish species and 3 sensitive fish species.	high		avoid closed
Perennial streams, dry washes and riparian areas associated with Salt Wash and its tributaries	Conservation of high concentrations on neotropical migrants and other sensitive wildlife species perennial streams and riparian areas	medium		avoid closed

Bar M/Klondike Area of Analysis



Moab Master Leasing Plan Stakeholder Mapping Workshops: Stakeholder Comments on 'Areas of Analysis'

BAR M/ KLONDIKE

Specific Location	Specific Interest	Level of Interest	Current RMP	Management Suggestions
<i>Resource Extraction</i>				
<i>Fidelity Exploration & Production Company</i>				
whole area	Development	Low/ Medium		Although not high-interest areas at this time for Fidelity, we do support the nomination and lease sale process for unleased areas, an MLP process that supports multiple-use, and a NEPA process that will not strand or limit existing state and federal leases Oil & Gas industry and Potash partners may currently hold or pursue in the future.
<i>Rockies Standard Oil Company</i>				
whole area	oil and gas development	High	Multiple - varies by area	
<i>James Kohler - Potash Industry</i>				
entire MLP area	potash development			The potash leasing procedures differ significantly from oil and gas, and the potash leasing rules require additional NEPA review beyond the RMP before leasing can proceed. Consequently, it is recommended that BLM not "close" areas to potash leasing through this MLP effort. Instead, the specific conflicts with other resource values (recreation, water, wildlife habitat, etc.) can be properly evaluated with a specific proposal before a decision is made to lease or not lease.
<i>Recreation</i>				
<i>Trail Mix</i>				
---entire area	Mt. Biking	Extremely High! Over 90 miles mt. bike trails Bar M, Klondike, and Klonzo combined	Mt. Bike Focus Areas in BLM 2008 RMP	
<i>PLS: Utah Outdoor Business Network</i>				
Bar M Trail System	Mtn Biking	Extremely high	CSU, NSO	Close to leasing to protect recreation economy
Sovereign/ Klonzo Trail Systems	Mtn Biking /OHV	Extremely high	Open, CSU	Close to leasing to protect recreation economy
Klondike and North Klondike Trails Systems	Mtn Biking / OHV	Extremely high	Open, CSU, NSO	Close to leasing to protect recreation economy
<i>Conservation</i>				
<i>National Parks Conservation Association</i>				
Salt Valley entrance road (unpaved) into Arches NP	conservation	low-medium	Special	special stipulations to site outside park viewshed and mitigation of impacts to night skies & soundscapes
Willow Flats/SITLA	conservation	high	Special	No leasing in 2 small slivers with special stipulations adjacent to Arches NP boundary

Moab Master Leasing Plan Stakeholder Mapping Workshops: Stakeholder Comments on 'Areas of Analysis'

BAR M/ KLONDIKE

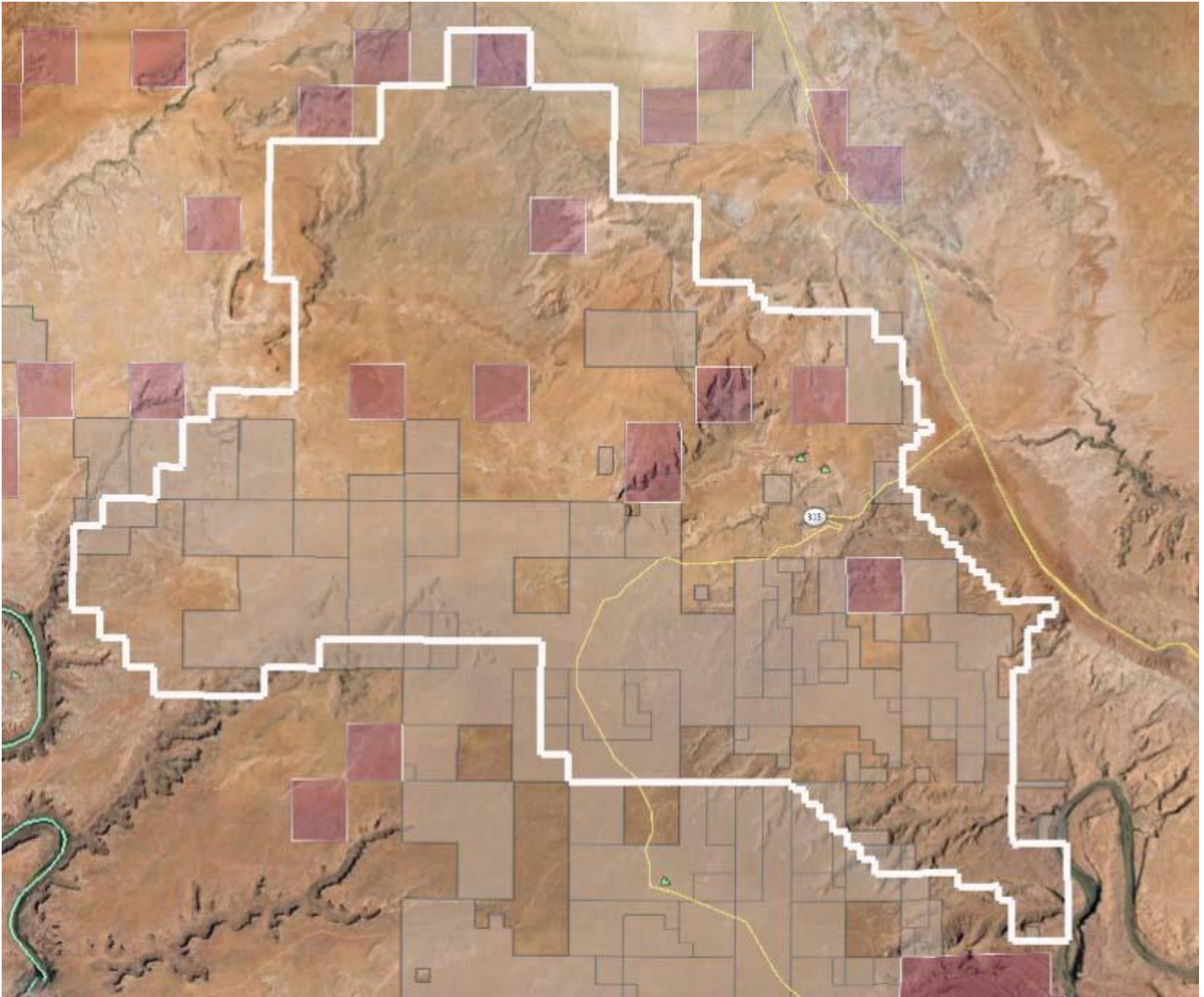
Hwy 191 between Arches NP entrance and Hwy 313	conservation	high	NSO	No leasing - important corridor for park visitors and recreational users at Bar M trails adjacent to Arches NP
<i>Grand Canyon Trust</i>				
All locations that intersect with the Utah Wilderness Coalition's "America's Redrock Wilderness Act" - a bill in Congress, H.R. 1630, S. 769	Conservation /Recreation	High		NSO or no leasing for the following proposed wilderness units
<i>Canyonlands Watershed Council</i>				
whole area	Water	High		This area is especially crucial to the seeps and springs of Arches National Park and 7 mile riparian zones. Riparian zones as well as intermittent and perennial water sources are present and should be protected
Devils Garden Campground Water Source	Water	High		Part of Arches Devil's Garden campground water source protection area is within the MLP area. This portion should be closed. Riparian zones as well as intermittent and perennial water sources are present and should be protected
Canyonlands Airport Drinking Water	Water	High		Part of the Canyonlands Airports drinking water source protection zone is within this area. This should be closed.
Arches NP Water Source	Water	High		Part of the Arches NP entrance station's water source protection zone exists within the MLP, this should be closed.
Private Campground	Water	High		NSO for recreation purposes. The gas station and campground are drinking water sources and should be protected.
Private Agriculture	Water	High		Private agriculture exists and should be protected.
<i>The Wilderness Society</i>				
Arches Adjacent Proposed Wilderness Units in America's Red Rock Wilderness Act	Conservation/ recreation/ wilderness	High	Varies but majority are open to leasing under standard terms or with timing limitations. Smaller percentage is NSO and very small percentage is closed to leasing.	Closed to leasing and additional protection in terms of visual resource management class I or II. Note that Wilderness Study Areas (part of the bill) are already required to be closed to future leasing and assigned visual resource management class I. Since the current RMP was finalized, the BLM has been operating under new guidance on identifying and managing lands with wilderness characteristics, which we think is an important change and part of the options the BLM has going forward to acknowledge the importance of these lands.
<i>Southern Utah Wilderness Alliance</i>				
Areas with Wilderness Characteristics Not being managed as such	Conservation/ Recreation	High	some NSO in canyon bottoms but most are standard/ special	Should be closed to leasing.
Arches Adjacent Proposed Wilderness Units in America's Red Rock Wilderness Act	Conservation /Recreation	High		Closed to leasing

Moab Master Leasing Plan Stakeholder Mapping Workshops: Stakeholder Comments on 'Areas of Analysis'

BAR M/ KLONDIKE

<i>Sierra Club</i>				
whole area	Conservation	High		The Sierra Club considers the entire area a region with significant conservation interests. Our policy is that oil should remain in the ground and as a society we should be looking at alternative sources of energy. We are not interested in identifying areas with low conservation interest and thus potential areas for oil and gas development.
<i>Additional Comments</i>				
T25S R20E portions of sections 12 and 13	Conservation of a few occurrences of BLM and State of Utah sensitive plant/animal species	medium		additional surveys needed, avoid/closed in plant locations and habitat and/or stipulations to protect sensitive wildlife species
Perennial streams, dry washes, springs and riparian areas associated with Courthouse Wash and its tributaries	Conservation of high concentrations on neotropical migrants and other sensitive wildlife species perennial streams and riparian areas	medium		avoid/close

10 Mile KPLA Area of Analysis



Moab Master Leasing Plan Stakeholder Mapping Workshops: Stakeholder Comments on 'Areas of Analysis'

10-MILE KPLA

Specific Location	Specific Interest	Level of Interest	Current RMP	Management Suggestions
<i>Resource Extraction</i>				
<i>Titan Energy Resources</i>				
general area	Development of oil and gas	High interest -- high potential	Currently available for oil and gas leasing with numerous stipulations (timing, soils, controlled surf use, etc)	No change in current requirements
<i>Fidelity Exploration & Production Company</i>				
whole area	Development	High	NSO, CSU, TL, Wildlife, VRM, Non WSA WC areas	Observe current RMP stipulations and guidance for BLM/State of Utah recognized natural resources. Cooperate with recreation within potential conflict areas. No other significant conflicts with other Workshop participants.
<i>American Potash</i>				
whole area	Development	High	nominal	The BLM has reviewed and compiled historical data and determined that the area be removed from prospecting and designated a 'Known Leasing Area'. This classification of the area as containing a 'valuable deposit of potash' underscores the significance of this area in regards to potential future development.
<i>Rockies Standard Oil Company</i>				
whole area	oil and gas development	High	Multiple - varies by area	
<i>James Kohler - Potash Industry</i>				
entire MLP area	potash development			The potash leasing procedures differ significantly from oil and gas, and the potash leasing rules require additional NEPA review beyond the RMP before leasing can proceed. Consequently, it is recommended that BLM not "close" areas to potash leasing through this MLP effort. Instead, the specific conflicts with other resource values (recreation, water, wildlife habitat, etc.) can be properly evaluated with a specific proposal before a decision is made to lease or not lease.
Areas designated as "Known Potash Leasing Areas" (including 10-Mile KPLA, Surrounding 10-Mile KPLA, and West of Moab)	potash development	High		These areas have been designated by the federal government as known to contain "valuable deposits of potash". Leasing should be allowed to be considered in these areas to meet market demands for potash in response to interest expressed by industry and following appropriate NEPA review by BLM.
Existing potash prospecting permits held by K2O Resources and American Potash	potash development	High		BLM has issued permits for these areas, and the companies have a limited time to complete the exploration and determine whether valuable potash deposits exist in these areas. BLM should not remove these areas for consideration for leasing through the MLP process until the exploration is complete and appropriate environmental review is conducted on any specific leasing proposal.

Moab Master Leasing Plan Stakeholder Mapping Workshops: Stakeholder Comments on 'Areas of Analysis'

10-MILE KPLA

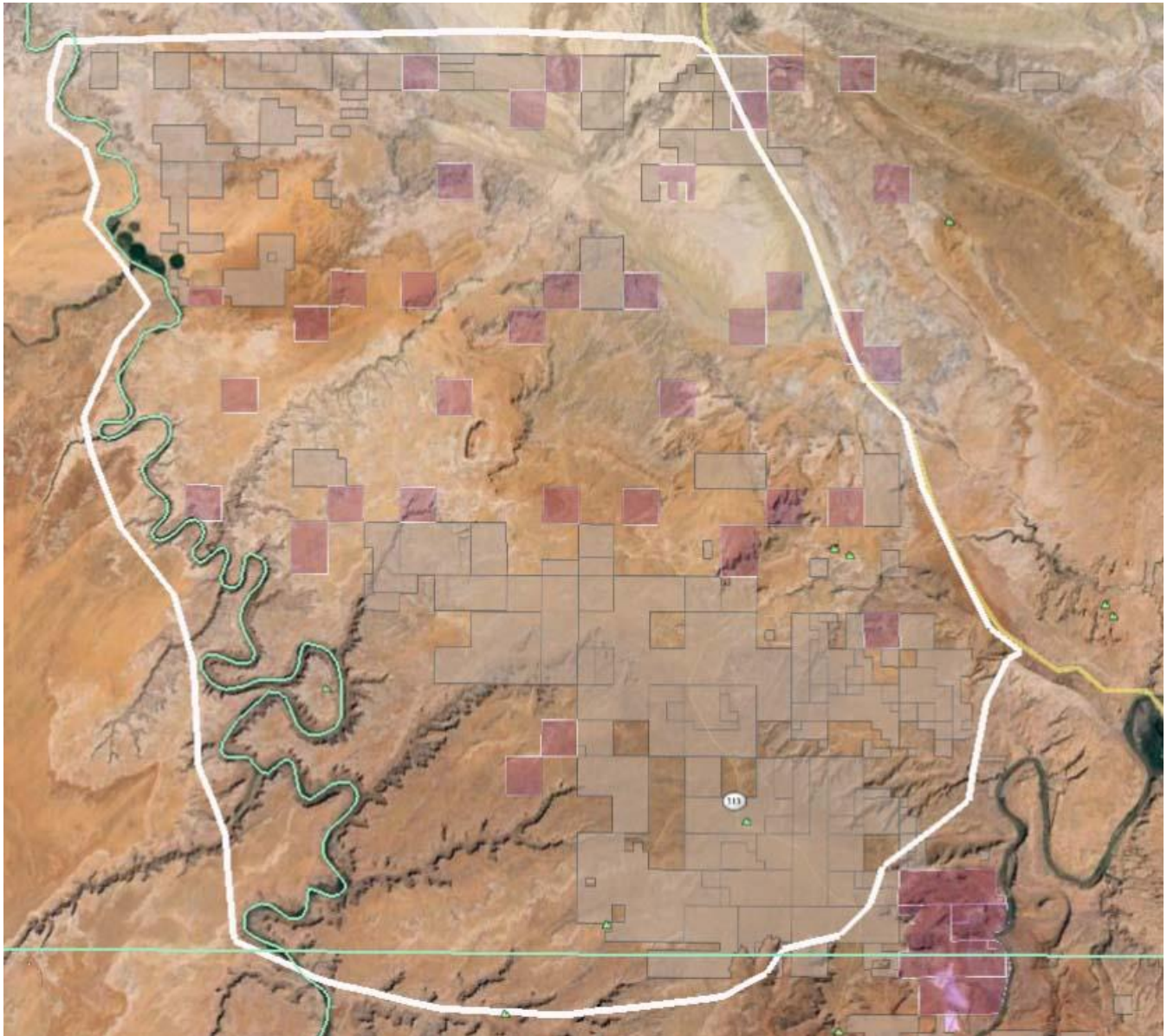
<i>Recreation</i>				
<i>Trail Mix</i>				
Merrimac/Monitor/ Gemini Bridges area, Mag 7, 7 Up, Navajo Rocks, Bartlett, Tusher mt. Bike Focus Areas.	Recreation - Important Mt. biking areas! Some hiking and climbing.	Extremely High! Many miles of very popular mt. biking trails	Merrimac and Monitor, Bartlett and Tusher in Mt. Biking Focus areas	
<i>PLS: Utah Outdoor Business Network</i>				
Gemini Bridges/ Mag 7	Mtn Biking	High	Special, NSO	Expand NSO area to protect recreation economy
Crack House/Bull Canyon	Climbing, OHV	High	Special, NSO	Maintain CSU and NSO
Tusher Canyon / Courthouse Pasture	Climbing, Mtn Biking, OHV	High	Special, NSO	Expand NSO area to protect recreation economy
Dubinky Well Rd	OHV	High	Open, CSU, NSO	Expand NSO area to protect recreation economy
Spring Canyon Rd	OHV	High	Open, CSU, NSO	Expand NSO area to protect recreation economy
Upper Hell Roaring Canyon	Climbing	High	NSO, Special	Expand NSO area to protect recreation economy
Long Canyon	Mtn Biking, OHV, Climbing	High	NSO	Maintain NSO
<i>Conservation</i>				
<i>National Parks Conservation Association</i>				
Blue Hills/Bartlett Flat area	conservation	medium	Standard	Extend NSO to include all of Arches NP viewshed and mitigate impacts to night skies & soundscapes
Hwy 313	conservation	high	NSO/Special	site development hidden from view of road, mitigate impacts to night skies & soundscapes
<i>Grand Canyon Trust</i>				
All Greater Canyonlands portions	Conservation /Recreation	High		NSO or no leasing for areas within the Greater Canyonlands Region
<i>Canyonlands Watershed Council</i>				
whole area	Water	Moderate		Water development has the possibility of impacting seeps and springs within Arches NP. Riparian zones as well as intermittent and perennial water sources are present and should be protected
<i>The Wilderness Society</i>				
Goldbar Canyon Proposed Wilderness Units in America's Red Rock Wilderness Act	Conservation/ recreation/ wilderness	High	Varies but majority are open to leasing under standard terms or with timing limitations. Smaller percentage is NSO and very small percentage is closed to leasing.	Closed to leasing and additional protection in terms of visual resource management class I or II. Note that Wilderness Study Areas (part of the bill) are already required to be closed to future leasing and assigned visual resource management class I. Since the current RMP was finalized, the BLM has been operating under new guidance on identifying and managing lands with wilderness characteristics, which we think is an important change and part of the options the BLM has going forward to acknowledge the importance of these lands.

Moab Master Leasing Plan Stakeholder Mapping Workshops: Stakeholder Comments on 'Areas of Analysis'

10-MILE KPLA

<i>Southern Utah Wilderness Alliance</i>				
Areas with Wilderness Characteristics Not being managed as such	Conservation/ Recreation	High	some NSO in canyon bottoms but most are standard/ special	Should be closed to leasing.
Goldbar Canyon Proposed Wilderness Units in America's Red Rock Wilderness Act	Conservation /Recreation	High		Closed to leasing
<i>Sierra Club</i>				
whole area	Conservation	High		The Sierra Club considers the entire area a region with significant conservation interests. Our policy is that oil should remain in the ground and as a society we should be looking at alternative sources of energy. We are not interested in identifying areas with low conservation interest and thus potential areas for oil and gas development.
<i>Additional Comments</i>				
T25S R18E portions of sec 3-4; T24S R19E portions of sec 14,24,26-30; T25S R20E portions of sec 33; and T26S R20E portions of sec 3	Conservation of high concentrations of BLM and State of Utah sensitive plant species	high		additional surveys needed, avoid/closed in plant locations and habitat
T25S R18E portions of sections 13,14,22-24,27 and 28; and T25S R19E portions of sections of 18-19	Conservation for desert bighorn sheep lambing areas	high		stipulations to protect sensitive wildlife

10 Mile KPLA Surrounding Area of Analysis



Moab Master Leasing Plan Stakeholder Mapping Workshops: Stakeholder Comments on 'Areas of Analysis'

SURROUNDING 10-MILE KPLA

Specific Location	Specific Interest	Level of Interest	Current RMP	Management Suggestions
<i>Resource Extraction</i>				
<i>Titan Energy Resources</i>				
general area	Development of oil and gas	High interest -- high potential	Currently available for oil and gas leasing with numerous stipulations (timing, soils, controlled surf use, etc.)	No change in current requirements
<i>Fidelity Exploration & Production Company</i>				
whole area	Development	High	NSO, CSU, TL, Wildlife, VRM, Non WSA WC areas	Observe current RMP stipulations and guidance for BLM/State of Utah recognized natural resources. Cooperate with recreation within potential conflict areas. No other significant conflicts with other Workshop participants.
<i>American Potash</i>				
Northwest of 10 Mile KPLA. Magna holds 14 federal potash Prospecting Permits and 9 state potash leases in this area.	Development	High	specific localized CSOs due to waterways and riparian areas	An independent technical report for American Potash has determined from historical data that a significant potash exploration target underlies this area. The report estimates that the Cycle 5 potash horizon comprises a sizable Exploration Target ranging from 600 million to 1 billion tonnes of potash, grading 19-29% KCl and 8-16 feet thick. Signifies high potential for development considerations.
Southwest of 10 Mile KPLA. Magna holds 11 federal potash Prospecting Permit applications and 2 state potash leases in this area.	Development	High	specific localized CSOs due to waterways and riparian areas	Highly prospective for potash determined through regional geological knowledge base requiring exploration to determine development potential.
South of the 10 Mile KPLA. Intrepid Potash's active potash solution mine operation is contained within this quadrant	Development	High	various localized considerations	Active mining area
North and East of the 10 Mile KPLA.	Development	Medium for Potash. High for potential infrastructure and access corridors.	various localized considerations	Maintaining access and Infrastructure corridors is paramount, but with the understanding that these corridors are localized and somewhat flexible.
<i>Rockies Standard Oil Company</i>				
whole area	oil and gas development	High	Multiple - varies by area	

Moab Master Leasing Plan Stakeholder Mapping Workshops: Stakeholder Comments on 'Areas of Analysis'

SURROUNDING 10-MILE KPLA

<i>James Kohler - Potash Industry</i>				
entire MLP area	potash development			The potash leasing procedures differ significantly from oil and gas, and the potash leasing rules require additional NEPA review beyond the RMP before leasing can proceed. Consequently, it is recommended that BLM not "close" areas to potash leasing through this MLP effort. Instead, the specific conflicts with other resource values (recreation, water, wildlife habitat, etc.) can be properly evaluated with a specific proposal before a decision is made to lease or not lease.
Areas designated as "Known Potash Leasing Areas" (including 10-Mile KPLA, Surrounding 10-Mile KPLA, and West of Moab)	potash development	High		These areas have been designated by the federal government as known to contain "valuable deposits of potash". Leasing should be allowed to be considered in these areas to meet market demands for potash in response to interest expressed by industry and following appropriate NEPA review by BLM.
Existing potash prospecting permits held by K2O Resources and American Potash	potash development	High		BLM has issued permits for these areas, and the companies have a limited time to complete the exploration and determine whether valuable potash deposits exist in these areas. BLM should not remove these areas for consideration for leasing through the MLP process until the exploration is complete and appropriate environmental review is conducted on any specific leasing proposal.
<i>Recreation</i>				
<i>Trail Mix</i>				
Gold Bar	hiking, climbing	Extremely High!	Hiking Focus Area	
Mineral, Spring, 10 Mile Canyon	hiking, climbing	Extremely High!		
Jewell Tibbets Arch	hiking, climbing	Extremely High!		
<i>PLS: Utah Outdoor Business Network</i>				
Mill Canyon	Mtn Biking, OHV, Climbing	High	NSO, CSU	Close to leasing
White Wash Sand Dunes	OHV	High	Open	Make NSO
Blue Hills Ranch Rd/ Ruby Ranch	OHV	High	CSU, Open NSO	Make NSO
Ten Mile Point / Dripping Springs	OHV	High	Open, CSU, NSO	
Mineral Bottom Rod / Dead Horse State Park Intrepid Trails	OHV / Mtn Biking	High	CSU, Open NSO	Close to leasing
Tombstone / Lost World Butte	Climbing, Mtn Biking, OHV	High	Open NSO	Expand to NSO or CSU to protect unique character
Spring Canyon / Lower Hell Roaring	Climbing, Hiking, OHV	High	NSO, Open	Expand to NSO or CSU to protect unique character and recreation assets
Labrynth Canyon	Boating	High	NSO	Close to leasing

Moab Master Leasing Plan Stakeholder Mapping Workshops: Stakeholder Comments on 'Areas of Analysis'

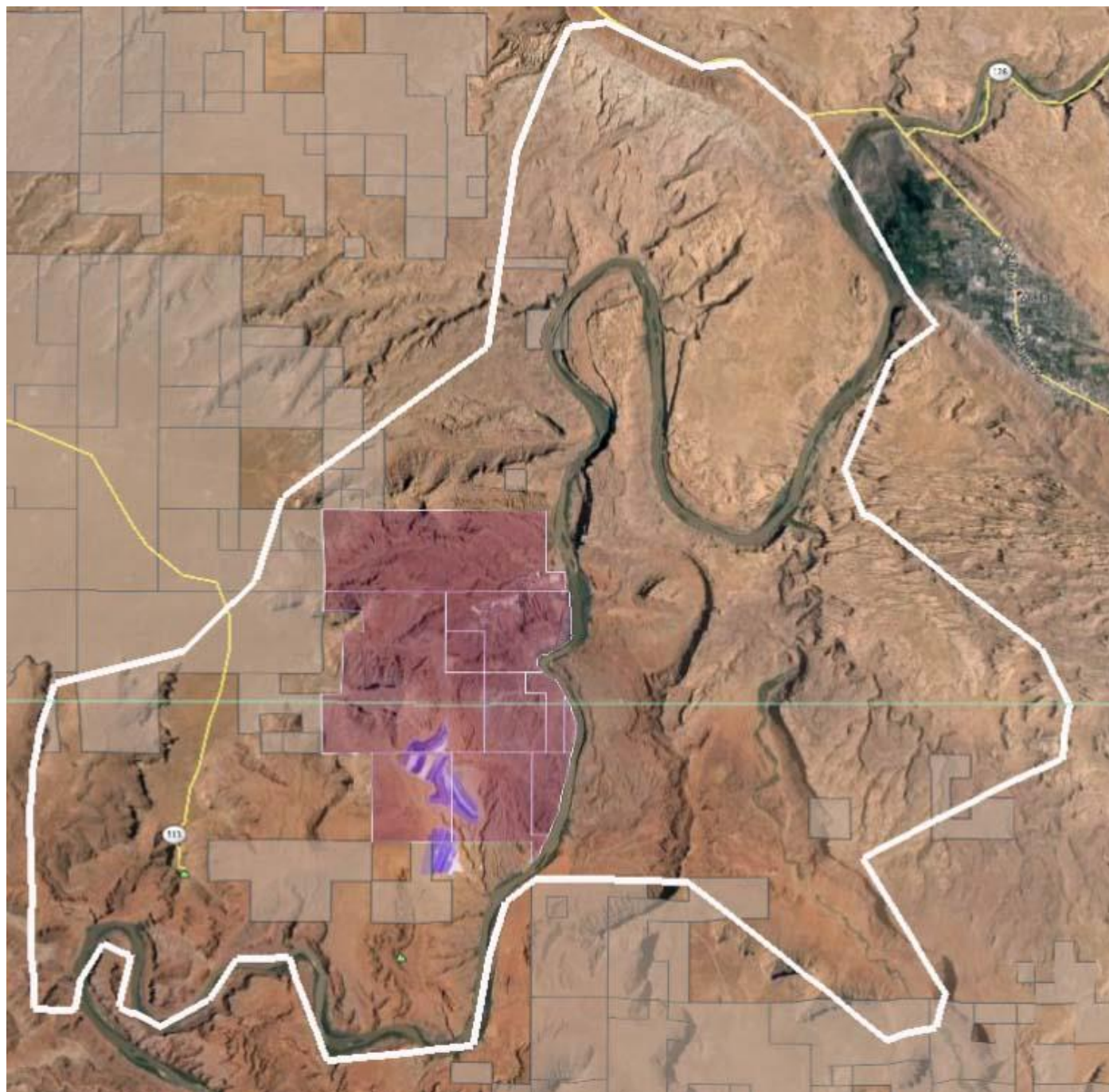
SURROUNDING 10-MILE KPLA

<i>Conservation</i>				
<i>National Parks Conservation Association</i>				
Mineral Canyon Rd	conservation	medium	Standard	if possible, site development hidden from view of road; mitigate for impacts to night skies and soundscapes
Blue Hills	conservation	medium	Standard	designate NSO on small BLM portion adjacent to Eastern edge of SITLA parcel
Mineral Point	conservation	medium	Standard	extend NSO to include all of park viewshed, some of which is currently under standard stipulations
<i>Grand Canyon Trust</i>				
All Greater Canyonlands portions	Conservation /Recreation	High		NSO or no leasing for areas within the Greater Canyonlands Region
All locations that intersect with the Utah Wilderness Coalition's "America's Redrock Wilderness Act" - a bill in Congress, H.R. 1630, S. 769	Conservation /Recreation	High		NSO or no leasing for the following proposed wilderness units
<i>Canyonlands Watershed Council</i>				
whole area	Water, Recreation	Moderate to High		The Canyonlands Field Airport's drinking water source protection zone should be closed. Water development has the possibility of impacting seeps and springs within Arches NP. Riparian zones as well as intermittent and perennial water sources are present and should be protected. NSO where high value recreation viewsheds are present.
<i>The Wilderness Society</i>				
Labyrinth Canyon, Duma Point Proposed Wilderness Units in America's Red Rock Wilderness Act	Conservation/ recreation/ wilderness	High	Varies but majority are open to leasing under standard terms or with timing limitations. Smaller percentage is NSO and very small percentage is closed to leasing.	Closed to leasing and additional protection in terms of visual resource management class I or II. Note that Wilderness Study Areas (part of the bill) are already required to be closed to future leasing and assigned visual resource management class I. Since the current RMP was finalized, the BLM has been operating under new guidance on identifying and managing lands with wilderness characteristics, which we think is an important change and part of the options the BLM has going forward to acknowledge the importance of these lands.
<i>Southern Utah Wilderness Alliance</i>				
Areas with Wilderness Characteristics Not being managed as such	Conservation/ Recreation	High	some NSO in canyon bottoms but most are standard/ special	Should be closed to leasing.
Labyrinth Canyon, Duma Point Proposed Wilderness Units in America's Red Rock Wilderness Act	Conservation /Recreation	High		Closed to leasing
<i>Sierra Club</i>				
whole area	Conservation	High		The Sierra Club considers the entire area a region with significant conservation interests. Our policy is that oil should remain in the ground and as a society we should be looking at alternative sources of energy. We are not interested in identifying areas with low conservation interest and thus potential areas for oil and gas development.

Moab Master Leasing Plan Stakeholder Mapping Workshops: Stakeholder Comments on 'Areas of Analysis'
SURROUNDING 10-MILE KPLA

<i>Additional Comments</i>				
T25S R18E portions of sec 4, T24S R18E portions of sec 33, T24S R20E secs 19,20, and 21	Conservation of high concentrations of BLM and State of Utah sensitive plant species	high		additional surveys needed, avoid/closed in plant locations and habitat
T25S R20E portions of sec 2,3,10-14 and 23-26; T25S R18E portions of sections 23-33; T26S E sec 1 and 2-21, T26S R17.5E sections 12-13 and 24-25;	Conservation of desert bighorn sheep lambing areas	high		avoid and/or stipulations for sensitive species.
T23S R19E sections 33-35	Conservation of sensitive wildlife	medium		stipulations
Green River Corridor	Conservation of riverine system and associated natural communities including critical habitat for 4 endangered Colorado fish species and 3 sensitive fish species.	high		avoid closed
All lands designated as critical habitat by the USFWS including portions of T26S R18E sec 31-35; T26S R18E sec 1-5; T27S R19E sec 5-6; and T26 S R19 E sec 30,25-26, and 35-36	Conservation of Mexican spotted owl habitat	high		additional surveys needed, avoid/closed in USFWS designated critical habitat
Perennial streams, dry washes, springs and riparian areas associated with Ten Mile Wash and its tributaries	Conservation of high concentrations on neotropical migrants and other sensitive wildlife species perennial streams and riparian areas	medium		close/avoid

West of Moab Area of Analysis



Moab Master Leasing Plan Stakeholder Mapping Workshops: Stakeholder Comments on 'Areas of Analysis'

WEST OF MOAB

Specific Location	Specific Interest	Level of Interest	Current RMP	Management Suggestions
<i>Resource Extraction</i>				
<i>Fidelity Exploration & Production Company</i>				
whole area	Development	Low /Medium	NSO, CSU, TL, Wildlife, VRM, Non WSA WC areas	Observe current RMP stipulations and guidance for BLM/State of Utah recognized natural resources. Cooperate with recreation within potential conflict areas. No other significant conflicts with other Workshop participants.
<i>Rockies Standard Oil Company</i>				
whole area	oil and gas development	High	Multiple - varies by area	
<i>James Kohler - Potash Industry</i>				
entire MLP area	potash development			The potash leasing procedures differ significantly from oil and gas, and the potash leasing rules require additional NEPA review beyond the RMP before leasing can proceed. Consequently, it is recommended that BLM not "close" areas to potash leasing through this MLP effort. Instead, the specific conflicts with other resource values (recreation, water, wildlife habitat, etc.) can be properly evaluated with a specific proposal before a decision is made to lease or not lease.
Areas designated as "Known Potash Leasing Areas" (including 10-Mile KPLA, Surrounding 10-Mile KPLA, and West of Moab)	potash development	High		These areas have been designated by the federal government as known to contain "valuable deposits of potash". Leasing should be allowed to be considered in these areas to meet market demands for potash in response to interest expressed by industry and following appropriate NEPA review by BLM.
<i>Recreation</i>				
<i>Trail Mix</i>				
Amasa Back Gold Bar Rim	Very popular Mt. Biking trails	High		
Potash Road Kane Creek Road	Very popular for Climbing	Extremely High		
Colorado River Corridor	Hiking	Extremely High		
All roads	Jeeping	Extremely High		
<i>PLS: Utah Outdoor Business Network</i>				
Crow's Head/Pyramid Butte	Mtn Biking, Climbing, OHV	High	NSO	Close to leasing
Amasa Back	Mtn Biking, OHV, climbing, hiking	High	NSO, CSU	Close to leasing
Kane Creek / Pritchett Canyon / Behind the Rocks	OHV, Mtn Biking, Hiking, Canyoneering	High	NSO, CSU	Close to leasing
Long Canyon / Day Canyon	Climbing, Mtn Biking, OHV, Hiking	High	NSO Open	Close to leasing
Poison Spider /Gold Bar / Portal	OHV, Mtn Biking, Canyoneering, Climbing, Hiking	High	NSO, CSU, Open	Close to leasing

Moab Master Leasing Plan Stakeholder Mapping Workshops: Stakeholder Comments on 'Areas of Analysis'

WEST OF MOAB

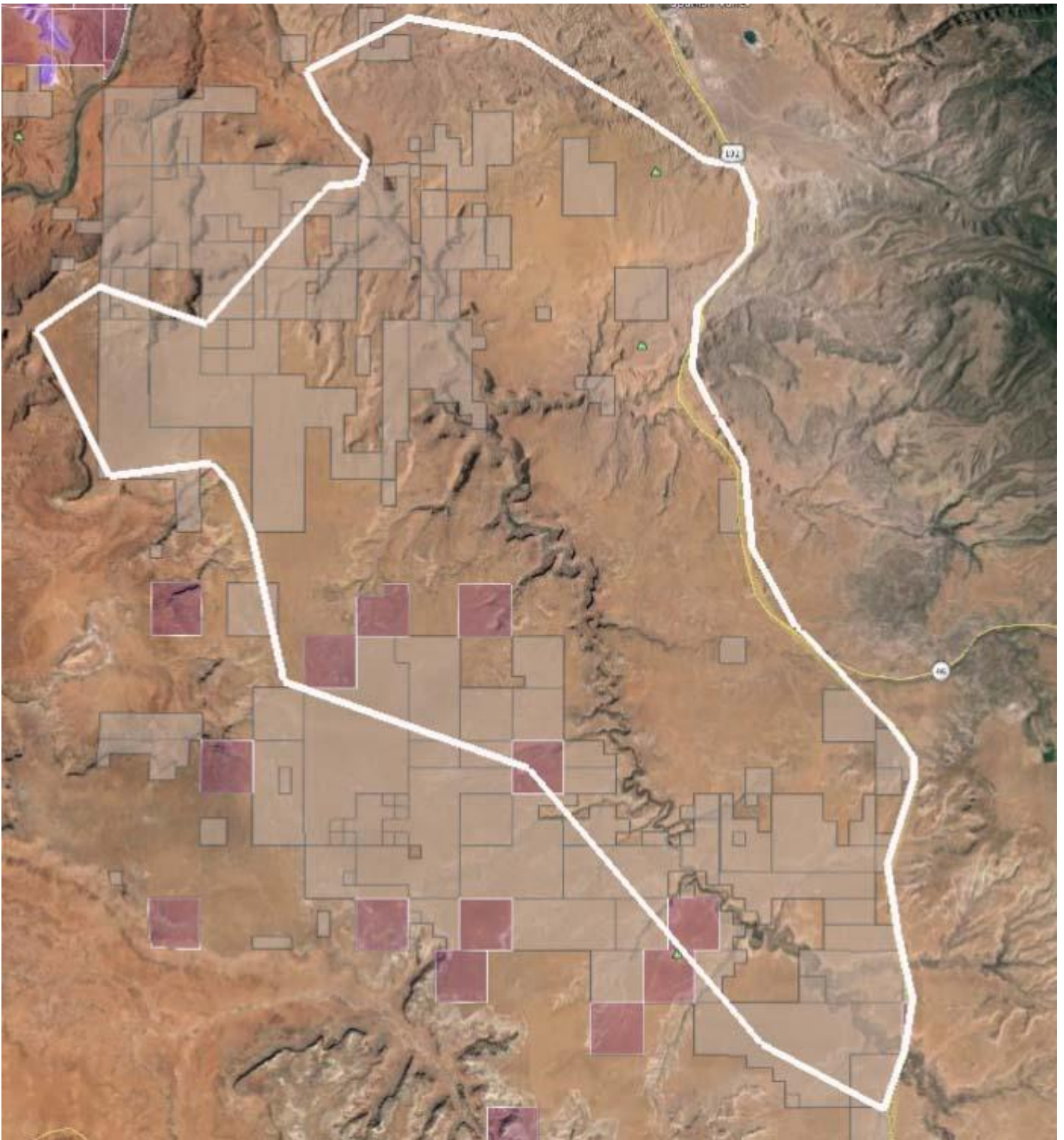
<i>Conservation</i>				
<i>National Parks Conservation Association</i>				
Kane Springs Rd/Kane Canyon	conservation	low	Special	extend NSO to include park viewshed adjacent to northern boundary of SITLA parcels
<i>Grand Canyon Trust</i>				
All Greater Canyonlands portions	Conservation /Recreation	High		NSO or no leasing for areas within the Greater Canyonlands Region
All locations that intersect with the Utah Wilderness Coalition's "America's Redrock Wilderness Act" - a bill in Congress, H.R. 1630, S. 769	Conservation /Recreation	High		NSO or no leasing for the following proposed wilderness units
<i>Canyonlands Watershed Council</i>				
whole area	Water, Recreation	High		Water development has the possibility of impacting seeps and springs within this area. Riparian zones as well as intermittent and perennial water sources are present and should be protected
Arches NP	Water, Recreation	High		Arches NP entrance station's drinking water source protection zone should be closed. Parts of the Moab Area watershed boundaries overlap the MLP zone. This area should be closed.
Moonflower, Hunter, and Kane Springs	Water, Recreation	High		Moonflower, Hunter, and Kane Springs Canyons are very popular riparian areas used extensively for a wide variety of recreation. A high priority should be placed on maintaining the health of these riparian zones as water resources are developed in Hatch and Kane washes.
Amass Back	Water, Recreation	High		Amasa Back is a particularly high value recreation area.
<i>Sierra Club</i>				
whole area	Conservation	High		The Sierra Club considers the entire area a region with significant conservation interests. Our policy is that oil should remain in the ground and as a society we should be looking at alternative sources of energy. We are not interested in identifying areas with low conservation interest and thus potential areas for oil and gas development.
<i>The Wilderness Society</i>				
Goldbar Canyon, Hunters Canyon, Behind the Rocks, Dead Horse Cliffs Proposed Wilderness Units in America's Red Rock Wilderness Act	Conservation/recreation/wilderness	High	Varies but majority are open to leasing under standard terms or with timing limitations. Smaller percentage is NSO and very small percentage is closed to leasing.	Closed to leasing and additional protection in terms of visual resource management class I or II. Note that Wilderness Study Areas (part of the bill) are already required to be closed to future leasing and assigned visual resource management class I. Since the current RMP was finalized, the BLM has been operating under new guidance on identifying and managing lands with wilderness characteristics, which we think is an important change and part of the options the BLM has going forward to acknowledge the importance of these lands.
<i>Southern Utah Wilderness Alliance</i>				
Areas with Wilderness Characteristics Not being managed as such	Conservation/Recreation	High	some NSO in canyon bottoms but most are standard/special	Should be closed to leasing.

Moab Master Leasing Plan Stakeholder Mapping Workshops: Stakeholder Comments on 'Areas of Analysis'

WEST OF MOAB

Goldbar Canyon, Hunters Canyon, Behind the Rocks, Dead Horse Cliffs Proposed Wilderness Units in America's Red Rock Wilderness Act	Conservation /Recreation	High		Closed to leasing
<i>Additional Comments</i>				
All sections within boundary of USFWS designated critical habitat for Mexican spotted owl	Conservation of Mexican spotted owl habitat (listed as threatened)	high		more surveys are needed, avoid/closed to protect habitat and secondary impacts
Colorado River Corridor	Conservation of riverine system and associated natural communities including critical habitat for 4 endangered Colorado fish species and 3 sensitive fish species.	high		avoid, closed
T26S R20E section 13-15, 21-24, 25-28, 31-36 and T27S R20E sections 2-10 and 16- 18	Conservation for desert bighorn sheep lambing areas	high		avoid, closed stipulations
Perennial streams, dry washes, springs and riparian areas associated with Kane Springs and its tributaries	Conservation of high concentrations on neotropical migrants and other sensitive wildlife species	medium		avoid

Hatch Point Area of Analysis



Moab Master Leasing Plan Stakeholder Mapping Workshops: Stakeholder Comments on 'Areas of Analysis'

HATCH POINT

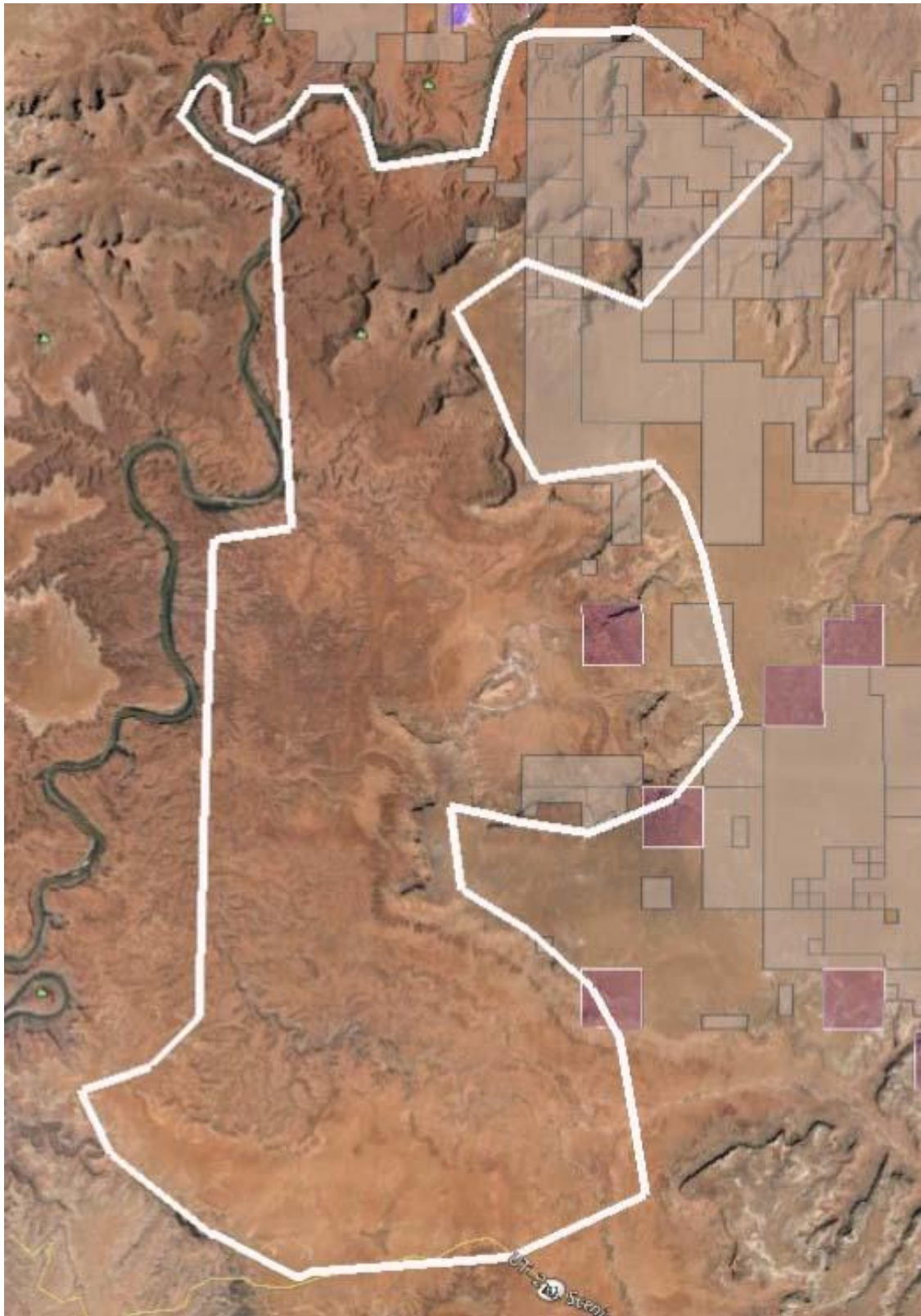
Specific Location	Specific Interest	Level of Interest	Current RMP	Management Suggestions
<i>Resource Extraction</i>				
<i>Titan Energy Resources</i>				
complete area	Development of oil and gas	High interest -- high potential	Currently available for oil and gas leasing with numerous stipulations (timing, soils, controlled surf use, etc)	Keep available for leasing with no change in current requirements
<i>Fidelity Exploration & Production Company</i>				
whole area	Development	High	NSO, CSU, TL, Wildlife, VRM, Non WSA WC areas	Observe current RMP stipulations and guidance for BLM/State of Utah recognized natural resources. Cooperate with recreation within potential conflict areas. No other significant conflicts with other Workshop participants.
<i>Rockies Standard Oil Company</i>				
whole area	oil and gas development	High	Multiple - varies by area	
<i>James Kohler - Potash Industry</i>				
entire MLP area	potash development			The potash leasing procedures differ significantly from oil and gas, and the potash leasing rules require additional NEPA review beyond the RMP before leasing can proceed. Consequently, it is recommended that BLM not "close" areas to potash leasing through this MLP effort. Instead, the specific conflicts with other resource values (recreation, water, wildlife habitat, etc.) can be properly evaluated with a specific proposal before a decision is made to lease or not lease.
Existing potash prospecting permits held by K2O Resources and American Potash	potash development	High		BLM has issued permits for these areas, and the companies have a limited time to complete the exploration and determine whether valuable potash deposits exist in these areas. BLM should not remove these areas for consideration for leasing through the MLP process until the exploration is complete and appropriate environmental review is conducted on any specific leasing proposal.
<i>Recreation</i>				
<i>PLS: Utah Outdoor Business Network</i>				
Hatch Wash	Climbing, Hiking	High	CSU	Designate as NSO to protect recreation economy
Looking Glass Rock	Climbing, OHV	Medium	CSU, NSO, Open	Expand NSO
Flat Iron Mesa	Climbing, Hiking, OHV	Medium	CSU, Open	Expand NSO
Kane Creek	OHV, Mtn Biking	High	CSU	Close to leasing to protect recreation economy
Prostitute Butte, Behind the Rocks, Sand Dunes	OHV, Mtn Biking	High	CSU, Open	Close to leasing to protect recreation economy
Anticline Overlook Road, OHV	Biking, OHV	High	CSU, Open, NSO	Designate as NSO to protect recreation economy
<i>Conservation</i>				
<i>National Parks Conservation Association</i>				
Behind the Rocks	conservation	high	Special/Standard	extend NSO designation to park viewshed currently under special and standard stipulations - these areas can be seen from both Arches and Canyonlands NP
Hatch Point Rd	conservation	high	Special	designate NSO within park viewshed; mitigate for night skies and sounds
Needles Overlook Rd	conservation	high	Special	site development out of view from road, mitigate for night skies & sounds

Moab Master Leasing Plan Stakeholder Mapping Workshops: Stakeholder Comments on 'Areas of Analysis'

HATCH POINT

Trout Water Canyon/Hatch Wash	conservation	high	Standard	designate NSO within park viewshed - this area can be seen from both Arches and Canyonlands NP
<i>Grand Canyon Trust</i>				
All Greater Canyonlands portions	Conservation /Recreation	High		NSO or no leasing for areas within the Greater Canyonlands Region
All locations that intersect with the Utah Wilderness Coalition's "America's Redrock Wilderness Act" - a bill in Congress, H.R. 1630, S. 769	Conservation /Recreation	High		NSO or no leasing for the following proposed wilderness units
<i>Canyonlands Watershed Council</i>				
whole area	Water	High		Water resource development and potential pollution has potential to be detrimental. Much care should be taken that the natural function of these riparian zones is maintained. Water resources should be studied and only those resources not connected with riparian zones should be developed.
<i>The Wilderness Society</i>				
Behind the Rocks, Hatch Canyon Proposed Wilderness Units in America's Red Rock Wilderness Act	Conservation/ recreation/ wilderness	High	Varies but majority are open to leasing under standard terms or with timing limitations. Smaller percentage is NSO and very small percentage is closed to leasing.	Closed to leasing and additional protection in terms of visual resource management class I or II. Note that Wilderness Study Areas (part of the bill) are already required to be closed to future leasing and assigned visual resource management class I. Since the current RMP was finalized, the BLM has been operating under new guidance on identifying and managing lands with wilderness characteristics, which we think is an important change and part of the options the BLM has going forward to acknowledge the importance of these lands.
<i>Southern Utah Wilderness Alliance</i>				
Areas with Wilderness Characteristics Not being managed as such	Conservation/Re creation	High	some NSO in canyon bottoms but most are standard/ special	Should be closed to leasing.
Behind the Rocks, Hatch Canyon Proposed Wilderness Units in America's Red Rock Wilderness Act	Conservation /Recreation	High		Closed to leasing
<i>Sierra Club</i>				
whole area	Conservation	High		The Sierra Club considers the entire area a region with significant conservation interests. Our policy is that oil should remain in the ground and as a society we should be looking at alternative sources of energy. We are not interested in identifying areas with low conservation interest and thus potential areas for oil and gas development.
<i>Additional Comments</i>				
All sections within boundary of USFWS designated critical habitat for Mexican spotted owl	Conservation of Mexican spotted owl habitat (listed as threatened)	high		more surveys are needed, avoid/closed to protect habitat and secondary impacts
perennial streams, dry washes and riparian areas associated with Hatch wash and its tributaries	Conservation of high concentrations on neotropical migrants and other sensitive wildlife species	medium		close and avoid

Lockhart Basin Area of Analysis



Moab Master Leasing Plan Stakeholder Mapping Workshops: Stakeholder Comments on 'Areas of Analysis'

LOCKHART BASIN

Specific Location	Specific Interest	Level of Interest	Current RMP	Management Suggestions
<i>Resource Extraction</i>				
<i>Fidelity Exploration & Production Company</i>				
general area	Development	Low	NSO, CSU, TL, Wildlife, VRM, Non WSA WC areas	Observe current RMP stipulations and guidance for BLM/State of Utah recognized natural resources. Cooperate with recreation within potential conflict areas. No other significant conflicts with other Workshop participants.
Transition to Hatch Point	Development	High	NSO, CSU, TL, Wildlife, VRM, Non WSA WC areas	Observe current RMP stipulations and guidance for BLM/State of Utah recognized natural resources. Cooperate with recreation within potential conflict areas. No other significant conflicts with other Workshop participants.
<i>Rockies Standard Oil Company</i>				
whole area	oil and gas development	High	Multiple - varies by area	
<i>James Kohler - Potash Industry</i>				
entire MLP area	potash development			The potash leasing procedures differ significantly from oil and gas, and the potash leasing rules require additional NEPA review beyond the RMP before leasing can proceed. Consequently, it is recommended that BLM not "close" areas to potash leasing through this MLP effort. Instead, the specific conflicts with other resource values (recreation, water, wildlife habitat, etc.) can be properly evaluated with a specific proposal before a decision is made to lease or not lease.
Existing potash prospecting permits held by K2O Resources and American Potash	potash development	High		BLM has issued permits for these areas, and the companies have a limited time to complete the exploration and determine whether valuable potash deposits exist in these areas. BLM should not remove these areas for consideration for leasing through the MLP process until the exploration is complete and appropriate environmental review is conducted on any specific leasing proposal.
<i>Recreation</i>				
<i>Canyonlands Watershed Council</i>				
Lockhart Basin	Camping, Mtn Biking, Hiking, Climbing	High	CSU	Close to leasing
Lockhart Basin Road	Mtn Biking, Climbing	High	CSU, NSO, Open	Close to leasing
Lockhart Basin	Hunting	Medium	CSU, NSO, Open	Close to leasing
<i>Conservation</i>				
<i>National Parks Conservation Association</i>				
Whole area	conservation	High	CSU -timing	close to leasing - this area is within NPCA's long-standing Canyonlands Completion proposal area and would have significant impacts on the park if developed

Moab Master Leasing Plan Stakeholder Mapping Workshops: Stakeholder Comments on 'Areas of Analysis'

LOCKHART BASIN

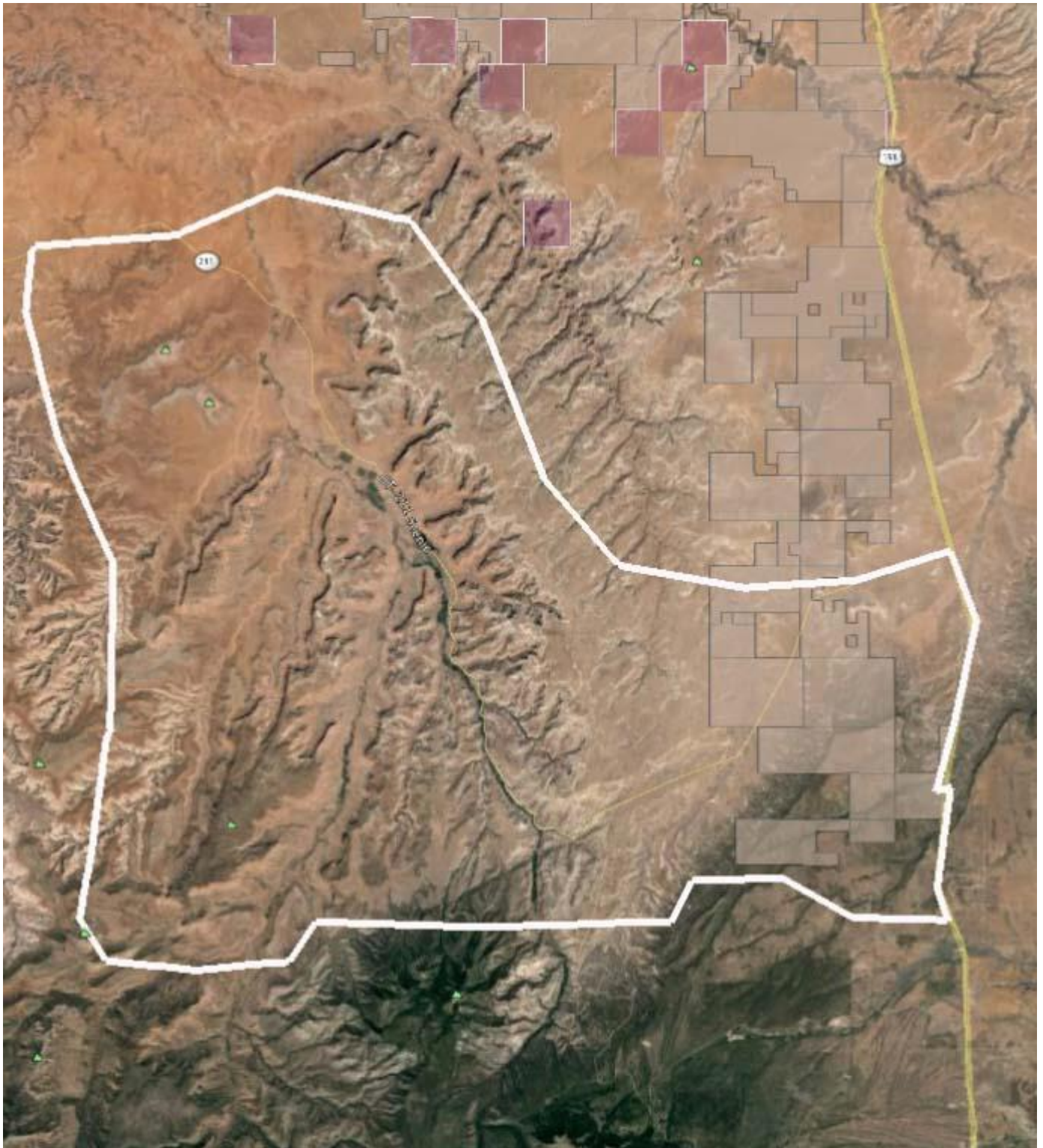
<i>Grand Canyon Trust</i>				
All Greater Canyonlands portions	Conservation /Recreation	High		NSO or no leasing for areas within the Greater Canyonlands Region
All locations that intersect with the Utah Wilderness Coalition's "America's Redrock Wilderness Act" - a bill in Congress, H.R. 1630, S. 769	Conservation /Recreation	High		NSO or no leasing for the following proposed wilderness units
<i>Canyonlands Watershed Council</i>				
whole area	Water	High		Water resource development and potential pollution has potential to be detrimental. Much care should be taken that the natural function of these riparian zones is maintained. Water resources should be studied and only those resources not connected with riparian zones should be developed.
<i>The Wilderness Society</i>				
Gooseneck, Lockhart Basin, Demon's Playground Proposed Wilderness Units in America's Red Rock Wilderness Act	Conservation/ recreation/ wilderness	High	Varies but majority are open to leasing under standard terms or with timing limitations. Smaller percentage is NSO and very small percentage is closed to leasing.	Closed to leasing and additional protection in terms of visual resource management class I or II. Note that Wilderness Study Areas (part of the bill) are already required to be closed to future leasing and assigned visual resource management class I. Since the current RMP was finalized, the BLM has been operating under new guidance on identifying and managing lands with wilderness characteristics, which we think is an important change and part of the options the BLM has going forward to acknowledge the importance of these lands.
<i>Southern Utah Wilderness Alliance</i>				
Areas with Wilderness Characteristics Not being managed as such	Conservation/ Recreation	High	some NSO in canyon bottoms but most are standard/ special	Should be closed to leasing.
Gooseneck, Lockhart Basin, Demon's Playground Proposed Wilderness Units in America's Red Rock Wilderness Act	Conservation /Recreation	High		Closed to leasing
<i>Sierra Club</i>				
whole area	Conservation	High		The Sierra Club considers the entire area a region with significant conservation interests. Our policy is that oil should remain in the ground and as a society we should be looking at alternative sources of energy. We are not interested in identifying areas with low conservation interest and thus potential areas for oil and gas development.
<i>Additional Comments</i>				
All sections within boundary of USFWS designated critical habitat for Mexican spotted owl	Conservation of Mexican spotted owl habitat (listed as threatened)	High		more surveys are needed, avoid/closed to protect habitat and secondary impacts

Moab Master Leasing Plan Stakeholder Mapping Workshops: Stakeholder Comments on 'Areas of Analysis'

LOCKHART BASIN

perennial streams, dry washes and riparian areas associated with Indian creek and its tributaries	Conservation of high concentrations on neotropical migrants and other sensitive wildlife species	Medium		close and avoid
Portions of T27S R20 E sec 33-36; T28S R20E sec 2-4, 11-14, 23-24; T28S R21E sec 19-21, 28-33; T29S R20 E sec 1-3, 9-16, 22-23 and T29S r21E sec 4-9, 13-16	Conservation for desert bighorn sheep lambing areas	High		close/avoid and stipulations to minimize impacts to sensitive habitats

Indian Creek Area of Analysis



Moab Master Leasing Plan Stakeholder Mapping Workshops: Stakeholder Comments on 'Areas of Analysis'

INDIAN CREEK

Specific Location	Specific Interest	Level of Interest	Current RMP	Management Suggestions
<i>Resource Extraction</i>				
<i>Fidelity Exploration & Production Company</i>				
general area	Development	Low/ Medium	NSO, CSU, TL, Wildlife, VRM, Non WSA WC areas	Observe current RMP stipulations and guidance for BLM/State of Utah recognized natural resources. No other significant conflicts with other Workshop participants.
<i>Rockies Standard Oil Company</i>				
whole area	oil and gas development	High	Multiple - varies by area	
<i>James Kohler - Potash Industry</i>				
entire MLP area	potash development			The potash leasing procedures differ significantly from oil and gas, and the potash leasing rules require additional NEPA review beyond the RMP before leasing can proceed. Consequently, it is recommended that BLM not "close" areas to potash leasing through this MLP effort. Instead, the specific conflicts with other resource values (recreation, water, wildlife habitat, etc.) can be properly evaluated with a specific proposal before a decision is made to lease or not lease.
<i>Recreation</i>				
<i>PLS: Utah Outdoor Business Network</i>				
Indian Creek	Climbing, hiking, mtn biking, OHV, Hunting	High	CSU	Close to leasing
Cotton Wood Creek	Climbing, hiking, mtn biking, OHV	High	Open, CSU	Close to leasing
Lavender Canyon, Davis Canyon, Corral Pocket	climbing, hiking, mtn biking	High	CSU, Open	Close to leasing
<i>Conservation</i>				
<i>National Parks Conservation Association</i>				
Hwy 211	conservation	high	CSU/CST	site development out of view of road; mitigate for night skies & sounds
Davis Canyon	conservation	high	NSO/S	extend NSO to all of park viewshed, some of which is designated S
south end Bridger Jack Mesa/Salt Creek Mesa	conservation	high	CST/T	NSO within park viewshed along park boundary and Bridger Jack Mesa southwestern boundary
Coral Pocket/Bogus Pocket	conservation	high	CSU	NSO within park viewshed
Hart Point Rd	conservation	medium	T	ensure development is sited outside of park viewshed along road; mitigate for night skies
Peters Point Ridge	conservation	medium	T	Site development outside park viewshed; mitigate for night skies
Harts Point/end of Harts Point Rd	conservation	high	CSU	NSO within park viewshed; mitigate impacts to night skies
scattered areas within park viewshed north of 211 & west of 191	conservation	low	T	Site development out of park viewshed: mitigate for night skies
<i>Dugout Ranch</i>				
whole area	conservation	high		National Conservation Area

Moab Master Leasing Plan Stakeholder Mapping Workshops: Stakeholder Comments on 'Areas of Analysis'

INDIAN CREEK

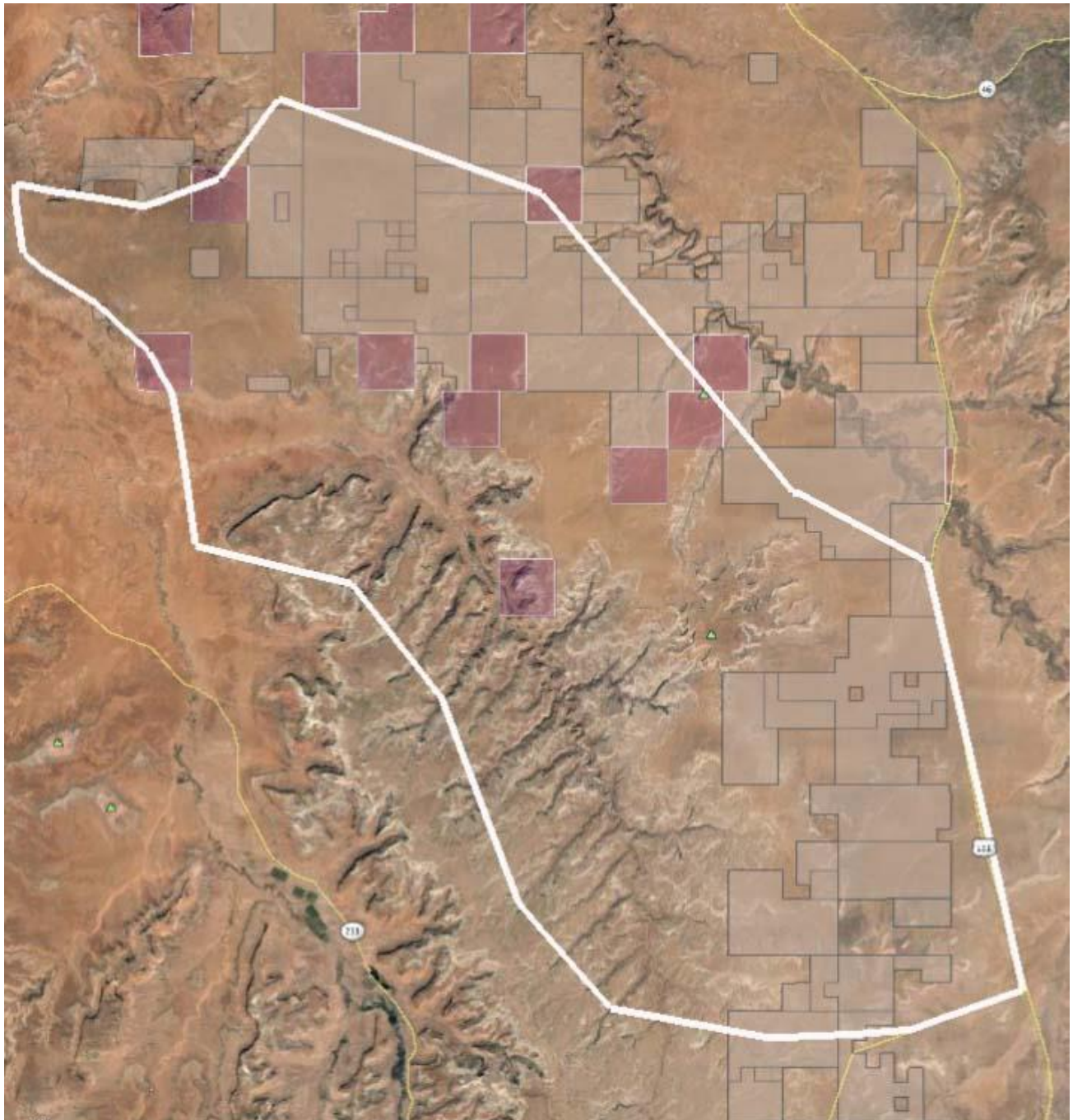
<i>Grand Canyon Trust</i>				
Seven Sisters Buttes Proposed Wilderness unit just south of Bridger Jack Mesa	Conservation/ Recreation	High		NSO or no leasing in the Seven Sisters Buttes unit proposed for wilderness in the Grand Canyon Trust's Forest Wilderness Proposal
All Greater Canyonlands portions	Conservation /Recreation	High		NSO or no leasing for areas within the Greater Canyonlands Region
All locations that intersect with the Utah Wilderness Coalition's "America's Redrock Wilderness Act" - a bill in Congress, H.R. 1630, S. 769	Conservation /Recreation	High		NSO or no leasing for the following proposed wilderness units
<i>Canyonlands Watershed Council</i>				
whole area	Water	High		Water resource development and potential pollution has potential to be detrimental. Much care should be taken that the natural function of these riparian zones is maintained. Water resources should be studied and only those resources not connected with riparian zones should be developed.
<i>Southern Utah Wilderness Alliance</i>				
Areas with Wilderness Characteristics Not being managed as such	Conservation /Recreation	High	some NSO in canyon bottoms but most are standard/ special	Should be closed to leasing.
Shay Mtn, Indian Creek, Bridger Jack Mesa, Indian Creek Adjacent's Proposed Wilderness Units in America's Red Rock Wilderness Act	Conservation /Recreation	High		Closed to leasing
<i>The Wilderness Society</i>				
Shay Mtn, Indian Creek, Bridger Jack Mesa, Indian Creek Adjacent's Proposed Wilderness Units in America's Red Rock Wilderness Act	Conservation/ recreation/wilderness	High	Varies but majority are open to leasing under standard terms or with timing limitations. Smaller percentage is NSO and very small percentage is closed to leasing.	Closed to leasing and additional protection in terms of visual resource management class I or II. Note that Wilderness Study Areas (part of the bill) are already required to be closed to future leasing and assigned visual resource management class I. Since the current RMP was finalized, the BLM has been operating under new guidance on identifying and managing lands with wilderness characteristics, which we think is an important change and part of the options the BLM has going forward to acknowledge the importance of these lands.
<i>Sierra Club</i>				
whole area	Conservation	High		The Sierra Club considers the entire area a region with significant conservation interests. Our policy is that oil should remain in the ground and as a society we should be looking at alternative sources of energy. We are not interested in identifying areas with low conservation interest and thus potential areas for oil and gas development.

Moab Master Leasing Plan Stakeholder Mapping Workshops: Stakeholder Comments on 'Areas of Analysis'

INDIAN CREEK

<i>Additional Comments</i>				
All sections within boundary of USFWS designated critical habitat for Mexican spotted owl	Conservation of Mexican spotted owl habitat (listed as threatened)	high		more surveys are needed, avoid/closed to protect habitat and secondary impacts
Perennial streams, dry washes and riparian areas associated with Indian Creek, North Cottonwood Wash and their tributaries	Conservation of high concentrations on neotropical migrants and other sensitive wildlife species	medium		close and avoid
Portions of T30S R21E sec 28, T31S R21E sec 4-8, T32S, R22E sec 28, T32S r21E sec 19	Conservation of high concentrations of BLM and State of Utah sensitive,	high		close/avoid
Mesa tops Brudger Jack Mesa and Lavendar	Conservation of relict areas important to science due to little human influence	high		close/avoid

Harts Point Area of Analysis



Moab Master Leasing Plan Stakeholder Mapping Workshops: Stakeholder Comments on 'Areas of Analysis'

HARTS POINT

Specific Location	Specific Interest	Level of Interest	Current RMP	Management Suggestions
<i>Resource Extraction</i>				
<i>Titan Energy Resources</i>				
whole area	Development of oil and gas	High interest -- high potential	Parts are currently available for oil and gas leasing with numerous stipulations (timing, soils, controlled surf use, etc). Some leases in this area have never issued	Keep available for leasing with no change in current requirements
<i>Fidelity Exploration & Production Company</i>				
whole area	Development	High	NSO, CSU, TL, Wildlife, VRM, Non WSA WC areas	Observe current RMP stipulations and guidance for BLM/State of Utah recognized natural resources. Cooperate with recreation within potential conflict areas. No other significant conflicts with other Workshop participants.
<i>Rockies Standard Oil Company</i>				
whole area	oil and gas development	High	Multiple - varies by area	
<i>James Kohler - Potash Industry</i>				
entire MLP area	potash development			The potash leasing procedures differ significantly from oil and gas, and the potash leasing rules require additional NEPA review beyond the RMP before leasing can proceed. Consequently, it is recommended that BLM not "close" areas to potash leasing through this MLP effort. Instead, the specific conflicts with other resource values (recreation, water, wildlife habitat, etc.) can be properly evaluated with a specific proposal before a decision is made to lease or not lease.
Existing potash prospecting permits held by K2O Resources and American Potash	potash development	High		BLM has issued permits for these areas, and the companies have a limited time to complete the exploration and determine whether valuable potash deposits exist in these areas. BLM should not remove these areas for consideration for leasing through the MLP process until the exploration is complete and appropriate environmental review is conducted on any specific leasing proposal.
<i>Recreation</i>				
<i>PLS: Utah Outdoor Business Network</i>				
Harts Draw	Climbing, Hiking	High	CSU	Designate as NSO to protect recreation economy
Eightmile Rock / Horsehead Rock	OHV	Moderate to High	CSU	Designate as NSO to protect recreation economy
Dry Valley Road	OHV	Moderate to High	CSU	Designate as NSO to protect recreation economy
<i>Conservation</i>				
<i>National Parks Conservation Association</i>				
Needles Overlook	conservation	high	special	designate NSO within park viewshed; mitigate for night skies and sounds
Needles Overlook Rd	conservation	high	special	ensure development is sited outside of park viewshed scattered along road; mitigate for night skies
Harts Draw	conservation	high	special	designate NSO within park viewshed;
scattered locations in southern end of area	conservation	medium	T	site development outside of scattered areas with park viewshed concerns; mitigate for night skies & sounds
<i>Grand Canyon Trust</i>				
All Greater Canyonlands portions	Conservation /Recreation	High		NSO or no leasing for areas within the Greater Canyonlands Region

Moab Master Leasing Plan Stakeholder Mapping Workshops: Stakeholder Comments on 'Areas of Analysis'

HARTS POINT

All locations that intersect with the Utah Wilderness Coalition's "America's Redrock Wilderness Act" - a bill in Congress, H.R. 1630, S. 769	Conservation /Recreation	High		NSO or no leasing for the following proposed wilderness units
<i>Canyonlands Watershed Council</i>				
whole area	Water	High		Water resource development and potential pollution has potential to be detrimental. Much care should be taken that the natural function of these riparian zones is maintained. Water resources should be studied and only those resources not connected with riparian zones should be developed.
<i>The Wilderness Society</i>				
Harts Point Proposed Wilderness Unit in America's Red Rock Wilderness Act	Conservation/ recreation/ wilderness	High	Varies but majority are open to leasing under standard terms or with timing limitations. Smaller percentage is NSO and very small percentage is closed to leasing.	Closed to leasing and additional protection in terms of visual resource management class I or II. Note that Wilderness Study Areas (part of the bill) are already required to be closed to future leasing and assigned visual resource management class I. Since the current RMP was finalized, the BLM has been operating under new guidance on identifying and managing lands with wilderness characteristics, which we think is an important change and part of the options the BLM has going forward to acknowledge the importance of these lands.
<i>Southern Utah Wilderness Alliance</i>				
Areas with Wilderness Characteristics Not being managed as such	Conservation/ Recreation	High	some NSO in canyon bottoms but most are standard/ special	Should be closed to leasing.
Harts Point Proposed Wilderness Unit in America's Red Rock Wilderness Act	Conservation /Recreation	High		Closed to leasing
<i>Sierra Club</i>				
whole area	Conservation	High		The Sierra Club considers the entire area a region with significant conservation interests. Our policy is that oil should remain in the ground and as a society we should be looking at alternative sources of energy. We are not interested in identifying areas with low conservation interest and thus potential areas for oil and gas development.
<i>Additional Comments</i>				
All sections within boundary of USFWS designated critical habitat for Mexican spotted owl	Conservation of Mexican spotted owl habitat (listed as threatened)	high		more surveys are needed, avoid/closed to protect habitat and secondary impacts
perennial streams, springs, dry washes and riparian areas associated with Harts Draw and its tributaries	Conservation of high concentrations on neotropical migrants and other sensitive wildlife species	medium		close and avoid
Portion of T30S R22E sec 99	Conservation of high concentrations of BLM and State of Utah sensitive,	high		close/avoid

Moab Master Leasing Plan Stakeholder Mapping Workshops

APPENDIX A: List of Workshop Participants

Moab Master Leasing Plan Mapping Workshop Participants <i>The Following Individuals and Organizations Participated in One or Both of the Workshop Meetings February 19, 2014 and/or March 19, 2014</i>		
First	Last	Organization
John	Glasscock	American Potash
Mike	Sieb	American Potash
Chris	Baird	Canyonlands Watershed Council
Mike	Keller	Fidelity Exploration & Production Company
Lisa	Hathaway	Friends of Indian Creek
Tim	Peterson	Grand Canyon Trust
Heidi	Redd	Indian Creek Cattle
Nick	Lund	National Parks Conservation Association
Erika	Pollard	National Parks Conservation Association
Jason	Keith	Public Land Solutions
Ashley	Korenblat	Public Land Solutions
Doug	McElhaney	Red Rocks Four Wheelers
Gordon	Gray	Reunion Potash
Cliff	Koontz	Ride with Respect
Kimball	Hodges	Rockies Standard Oil Company
Wayne	Hoskisson	Sierra Club
Steve	Bloch	Southern Utah Wilderness Alliance
Sue	Bellagamba	The Nature Conservancy
Nada	Culver	The Wilderness Society
Jason	Blake	Titan Energy Resources
Sandy	Freethy	Trail Mix
James	Kohler	Utah Geosystems
Brian	Merrill	Utah Guides and Outfitters/Outdoor Industry Association
Kim	Norman	Utah Potash, LLC
Lowell	Braxton	Western Energy Alliance

The meetings were hosted by Mayor Dave Sakrison, City of Moab. Facilitation and note-taking was provided by Julie Shapiro and Matthew Mulica, The Keystone Center. Jonathan Knight, Knight Geospatial Services, provided GIS technician support.

Observers were in attendance at each meeting; observers included representatives of local (Grand and San Juan Counties), state (State of Utah and School and Institutional Trust Lands Administration), and federal government entities (Bureau of Land Management and National Park Service) as well as private sector representatives and private citizens.

APPENDIX B: Table of Map Layers for Moab Master Leasing Plan Stakeholder Mapping Workshops

Stakeholders provided map layers representing their various interests within the MLP area; these layers were synthesized by Jonathan Knight, Knight Geospatial Services, into an ARC GIS map platform. **Please see Appendix B** for a list of the map layers and please utilize the link below to access the online map.

<http://www.arcgis.com/home/group.html?id=bf343940b9b144d9ad9e2a628b3691a2>

Data Source	Credit	Category(s)	Original Layer	Date	Meta data	Database Layer	Web Layer	Description	Geometry	Notes
BLM	BLM (Utah)	Base	BLMdistricts	9/1/2008	Yes	BLM_UT_Districts	BLM FieldOffice Boundary	Field Office boundaries and District boundaries; use at 24K or smaller scales	Polygon	
BLM	SITLA/BLM	Base	LandOwnership	6/1/2010	Yes	Land_Jurisdiction_MLP	Land Jurisdiction - SITLA/BLM	Jurisdiction maintained by SITLA/BLM	Polygon	
BLM	Grand County	Base	Grand_b_roads		Yes	Grand_County_B_Roads	Grand County B Roads	Class B roads in Grand County	Line	
BLM via Grand Canyon Trust	BLM/CC District	Base	MLP_1_13_2012	1/13/2012	No	MLP_1_13_2012	MLP-1/13/2012	Master Leasing Plan Boundary	Polygon	
Public Lands Solutions	Public Lands Solutions	Base	MLP_Areas_of_Analysis	2014	No	MLP_Areas_of_Analysis	MLP Workshop Areas of Analysis	11 Areas of Analysis with in the MLP	Polygon	
San Juan County	San Juan County	Base	SanJuan_b_roads		No	SanJuan_County_B_Roads	San Juan County B Roads	Class B roads in San Juan County	Line	
AGRC	State of Utah, AGRC	Conservation	BLM_RMP TargetedLands		No	BLM_RMP_Targeted_Lands	BLM Targeted Lands RMP	Lands targeted for acquisition or disposal	Polygon	
BLM	BLM (Utah)	Conservation	Grazing_Allotments_BLM	3/11/2011	Yes	BLM_Grazing_Allotments_MLP	BLM Grazing Allotments	BLM Grazing Allotments	Polygon	
BLM	BLM (Utah)	Conservation	Wilderness Study Areas	11/3/2003	Yes	Wilderness_Study_Areas	Wilderness Study Areas	WSA by type	Polygon	
BLM	BLM (Utah)	Conservation	Wilderness_BLM Suitability	10/18/1991	Yes	BLM_Wilderness_Suitability_Determinations	BLM Wilderness Suitability Determinations	WSAs or portions of WSAs recommended to Congress as suitable for Wilderness Designation	Polygon	
BLM Request 2/26/20	BLM/CC District	Conservation	SpanishTrail	7/2001	Yes	Old_Spanish_Trail	Old Spanish Trail	Old Spanish historic trail	Line	

Data Source	Credit	Category(s)	Original Layer	Date	Meta data	Database Layer	Web Layer	Description	Geometry	Notes
14-2/28/2014										
BLM Request 2/26/2014-2/28/2014	BLM/CC District	Conservation	wc_review	3/10/2008	Yes	Inventoried_No_Wilderness_Character	Inventoried Lands Lacking Wilderness Character	Lands Inventoried and determined by the BLM to Lack Wilderness Character	Polygon	
BLM Request 2/26/2014-2/28/2014	BLM/CC District	Conservation	NaturalAreas	2/27/2007	Yes	Managed_Areas_of_WildernessCharacter	Managed Areas of WildernessCharacter	Lands managed to protect wilderness character	Polygon	
BLM via Grand Canyon Trust	BLM/CC District	Conservation	acec_moabfo_MLP		No	BLM_ACEC_MLP	BLM Areas of Critical Environmental Concern	ACECs clipped to MLP/Moab FO	Polygon	
BLM via Grand Canyon Trust	BLM/CC District	Conservation	acec_mtfo_MLP		No	BLM_ACEC_MLP	BLM Areas of Critical Environmental Concern	ACECs clipped to MLP/Monticello FO	Polygon	
BLM via Grand Canyon Trust	BLM/CC District	Conservation	wc_moabfo_MLP	2/27/2007	Yes	BLM_Wilderness_Characteristics_MLP	BLM Wilderness Characteristics	Wilderness Characteristics from 1999 Wilderness Reinventory and 2007 Wilderness Character Review Moab FO	Polygon	
BLM via Grand Canyon Trust	BLM/CC District	Conservation	wc_mtfo_MLP	2/27/2007	Yes	BLM_Wilderness_Characteristics_MLP	BLM Wilderness Characteristics	Wilderness Characteristics from Wilderness Character Review Monticello FO	Polygon	
Canyonlands Watershed Council		Conservation	Castle_Valley_Watershed		No	Castle_Valley_Watershed	Castle Valley Watershed	Large watershed area	Polygon	
Canyonlands Watershed Council		Conservation	groundwater		No	Groundwater_Protection_Zones	Groundwater Protection Zones	Groundwater protection zones	Polygon	Circular buffers or Polygons

Data Source	Credit	Category(s)	Original Layer	Date	Meta data	Database Layer	Web Layer	Description	Geometry	Notes
Canyonlands Watershed Council		Conservation	Spanish_Valley_Watershed		No	Spanish_Valley_Watershed	Spanish Valley Watershed	Large watershed area	Polygon	
Canyonlands Watershed Council		Conservation	swazones		No	Sourcewater_Protection_Zones	Sourcewater Protection Zones	Source water protection zones	Polygon	Directionally oriented, semi-circular buffers
Canyonlands Watershed Council		Conservation	WaterRelatedLandUse		No	Utah_Water_Related_Landuse	Utah Water Related Landuse	Water-related land-use for all agricultural areas of the State including streams, waterbodies, riparian, urban, and agricultural types	Polygon	
Canyonlands Watershed Council		Conservation	watersources		No	Watersources	Water Sources	Wells, Springs, Intakes, Consecutive Connections	Point	
Grand Canyon Trust	Greater Canyonlands Coalition	Conservation	Final_Greater_Canyonlands_Boundary_March_11_2013	3/11/2013	Yes	Greater_Canyonlands_Proposed_Boundary	Greater_Canyonlands_Proposed_Boundary	Greater Canyonlands proposed boundary	Polygon	
Grand Canyon Trust	Grand Canyon Trust	Conservation	GCT_FS_Wild_Grand_SanJuan	2014	Yes	GCT_FS_Wilderness_Proposal	GCT_FS_Wilderness_Proposal	Forest Service Lands Wilderness Proposal for Grand and San Juan counties	Polygon	
Grand Canyon Trust	BLM	Conservation	saline_soils_mfo_mlp.shp	2008	Yes	SalineSoils_Moab_FO_MLP	Saline Soils Moab FO	Moderate - High Saline soils within the MLP - Moab FO	Polygon	
Sierra Club		Conservation	Utah_303D_Water Quality		No	Water_Quality_303D_ImpairedWaters	Water Quality 303D Impaired Waters	Impaired Waters	Line	Selenium
SUWA	SUWA/Wild Utah	Conservation	UWC_Grand_Updated_Feb4_2014		Yes	UWC_Wilderness_Proposal	UWC Wilderness Proposal	Utah Wilderness Coalition Proposed Wilderness	Polygon	

Data Source	Credit	Category(s)	Original Layer	Date	Meta data	Database Layer	Web Layer	Description	Geometry	Notes
SUWA	SUWA/ Wild Utah	Conservation	UWC_San Juan_Upd ated_Feb 4_2014		Yes	UWC_Wilderness_Pro posal	UWC Wilderness Proposal	Utah Wilderness Coalition Proposed Wilderness	Polygon	
TNC (The Nature Conserv ancy)	TNC	Conservation	Heidivisua l		No	IndianCreek_Visually_ Significant_Area	Indian Creek Visually Significant Area	Area of Visual Significance - Indian Creek	Polygon	PDF Reference - No Metadata
TNC (The Nature Conserv ancy)	TNC	Conservation	hydroln		No	HighQuality_Riparian_ Habitat	High Quality Riparian Habitat	High Quality Riparian/Potential Yellow-Billed Cuckoo Habitat	Polygon	PDF Reference - No Metadata
TWS (The Wildern ess Society)	BLM	Conservation	WildSceni c_Propose d	3/8/2005	Yes	Wild_Scenic_River_Pr oposed	BLM Wild Scenic River Status Suitability/Proposed	Proposed Wild and Scenic Designation	Polygon	
BLM via Grand Canyon Trust	BLM	Recreation	MLP_focu s_areas_S RMA_inte rsect		No	BLM_FocusAreas (Subset of SRMA)	BLM SRMA Focus Areas	BLM Recreation Focus Areas nested within the BLM SRMA layer	Polygon	
BLM via Grand Canyon Trust	BLM	Recreation	MLP_focu s_areas_S RMA_inte rsect		No	BLM_Special_Recreati on_ManagementArea	BLM Special Recreation Management Areas	BLM Special Recreation Management Area (SRMA)	Polygon	
Public Lands Solutio ns	Public Lands Solutions	Recreation	4X4_Locat ions	2014	Yes	Four_by_Four_Locatio ns	4X4 Locations	Centralized 4X4 Locations	Point	
Public Lands Solutio ns	Public Lands Solutions	Recreation	4X4_Rout es	2014	Yes	Four_by_Four_Routes	4X4 Routes	4X4 Routes	Line	
Public Lands Solutio ns	Public Lands Solutions	Recreation	BaseJump ing_Locati ons	2014	Yes	BaseJumping_Location s	Other Recreation Locations	Centralized Base Jumping Locations	Point	
Public Lands Solutio	Public Lands Solutions	Recreation	Hiking_Ca nyoneerin g_Locatio	2014	Yes	Hiking_Canyoneering_ Locations	Hiking and Canyoneering Locations	Centralized Canyoneering Locations	Point	

Data Source	Credit	Category(s)	Original Layer	Date	Meta data	Database Layer	Web Layer	Description	Geometry	Notes
ns			ns							
Public Lands Solutions	Public Lands Solutions	Recreation	Climbing_Locations	2014	Yes	Climbing_Locations	Climbing Locations	Centralized Climbing Locations	Point	
Public Lands Solutions	Public Lands Solutions	Recreation	HotAirBalloon_Locations	2014	Yes	HotAirBalloon_Locations	Other Recreation Locations	Hot Air Balloon Locations	Point	
Public Lands Solutions	Public Lands Solutions	Recreation	Equestrian_Locations	2014	Yes	Equestrian_Locations	Other Recreation Locations	Centralized Equestrian Locations	Point	
Public Lands Solutions	Public Lands Solutions	Recreation	Hunting_Locations	2014	Yes	Hunting_Locations	Other Recreation Locations	Centralized Hunting Locations	Point	
Public Lands Solutions	Public Lands Solutions	Recreation	MtBike_Trails	2014	Yes	Mt_Bike_Trails	Mountain Bike Trails	Mountain Bike Trails	Line	
Public Lands Solutions	Public Lands Solutions	Recreation	MtBiking_Locations	2014	Yes	MtBiking_Locations	Mountain Biking Locations	Centralized Mountain Biking Locations	Point	
Public Lands Solutions	Public Lands Solutions	Recreation	PLS_RMA	2014	Yes	PLS_Proposed_RMAs	Proposed Recreation Management Areas	Proposed recreation management areas	Polygon	
Public Lands Solutions	Public Lands Solutions	Recreation	Rivers	2014	Yes	Rivers	River Recreation	River Recreation	Line	
Public Lands Solutions	Public Lands Solutions	Recreation	ScenicFlights_HotAirBalloon_Locations	2014	Yes	ScenicFlights_Locations	Other Recreation Locations	Centralized Scenic Flight and Hot Air Balloon Locations	Point	
American Potash	American Potash	Resource Extraction	State Potash Leases	2014	No	American_Potash_GreenRiver_Project	American Potash GreenRiver Project	Green River Potash Project	Polygon	

Data Source	Credit	Category(s)	Original Layer	Date	Meta data	Database Layer	Web Layer	Description	Geometry	Notes
BLM	BLM (Utah)	Resource Extraction	Oil_and_Gas_Leases	1/30/2014	Yes	Oil_Gas_Leases	Oil Gas Leases	Authorized and pending Oil and Gas Leases derived from legal descriptions in the BLM LR2000 Case Recordation Database	Polygon	
BLM	BLM (Utah)	Resource Extraction	units	9/11/2013	Yes	Oil_Gas_Units	Oil Gas Unit Agreements - BLM	Oil and gas Unit Agreements and other resources; use at 24K or smaller scales	Polygon	Purpose to allow for conflict identification between oil and gas Unit Agreements and other resources
BLM Request 2/26/2014-2/28/2014	BLM/CC District	Resource Extraction	kpla_all	2011	Yes	Known_Potash_LeasingAreas	Known Potash Leasing Areas - BLM	Known Potash Leasing Areas within the MLP	Polygon	
BLM Request 2/26/2014-2/28/2014	BLM/CC District	Resource Extraction	Approved Fidelity Pipeline		No	Deadhorse_NaturalGas_Capture_Pipeline	Deadhorse NaturalGas Capture Pipeline	New pipeline from the Big Flat oil field to transport captured natural gas	Line	
BLM Request 2/26/2014-2/28/2014	BLM/CC District	Resource Extraction	Potash&SaltPrefRightLeases	2006	Yes	BLM_Potash_Preferred_Right_Leases	BLM_Potash_Preferred_Right_Leases	Contains the known potash/potassium preference right leases extracted from LR2000	Polygon	
BLM Request 2/26/2014-2/28/2014	AGRC	Resource Extraction	OilGasPipelines_ut24.shp	2011	Yes	Existing_Oil_Gas_Pipelines	Existing Oil and Gas Pipelines	Existing oil and gas pipelines relative to the Moab MLP	Line	
BLM Request 2/26/2014-	BLM/CC District	Resource Extraction	MTFO_ogcat_mlp		No	Monticello_FO_Oil_Gas_Special_Stipulations	Monticello FO Oil and Gas Special Stipulations	Oil and Gas Special Stipulations - Monticello FO MLP	Polygon	

Data Source	Credit	Category(s)	Original Layer	Date	Meta data	Database Layer	Web Layer	Description	Geometry	Notes
2/28/2014										
BLM Request 2/26/2014-2/28/2014	BLM/CC District	Resource Extraction	ogwells_mlp_2012.shp	4/16/2012	Yes	Oil_Gas_Wells_Status_2014	Oil and Gas Wells - Status - BLM	Oil and gas well locations on BLM and State lands by status	Point	
BLM Request 2/26/2014-2/28/2014	BLM/CC District	Resource Extraction	PPA_2_21_2014.shp	2/21/2014	Yes	Prospecting_Permit_Applications_20140221	Prospecting Permit Applications - BLM	Prospecting Permit Applications - Current	Polygon	
BLM Request 2/26/2014-3/11/2014	BLM/CC District	Resource Extraction	Am_Pot_Approved		No	American_Potash_Approved_Prospecting_Permit_Areas	American Potash Approved Prospecting Permit Areas	American Potash approved permit areas for prospecting	Polygon	
BLM Request 2/26/2014-3/11/2014	BLM/CC District	Resource Extraction	DeadHorse_Edited_GPS		No	Deadhorse_NaturalGas_Capture_Pipeline	Fidelity Dead Horse Lateral Natural Gas Pipeline	Fidelity pipeline for transport of natural gas captured from oil wells in the Big Flat area, adjacent Dead Horse Point State Park	Line	
BLM Request 2/26/2014-3/11/2014	BLM/CC District	Resource Extraction	K2O_Approved		No	K2O_Approved_Potash_Prospecting_Permit_Areas	K2O Utah Project Approved Potash Prospecting Permit Areas	K2O Utah Project approved potash permit areas for prospecting	Polygon	
BLM via Grand Canyon Trust	BLM/CC District	Resource Extraction	MFO_ogc_at_special_mlp	10/30/2008	Yes	Moab_FO_Oil_Gas_Special_Stipulations	Moab FO Oil Gas Special Stipulations	Oil and Gas Special Stipulations for the Moab RMP 10/30/2008	Polygon	
BLM via Grand Canyon Trust	BLM/CC District	Resource Extraction	MFO_ogc_at_standard_mlp	10/30/2008	Yes	Moab_FO_Oil_Gas_Standard_Stipulations	Moab FO Oil Gas Standard Stipulations	Oil and Gas Standard Stipulations for the Moab RMP 10/30/2008	Polygon	
BLM via Grand	BLM/CC District	Resource Extraction	MLP_1_13_2012	1/13/2012		MLP_1_13_2012	MLP-1/13/2012	Master Leasing Plan Boundary	Polygon	

Data Source	Credit	Category(s)	Original Layer	Date	Meta data	Database Layer	Web Layer	Description	Geometry	Notes
Canyon Trust										
Fidelity Exploration and Production Company	FEPC	Resource Extraction	FEPC Unit Boundaries	9/11/2013	Yes	Fidelity_Oil_Gas_Units	Oil and Gas Units - Fidelity	Fidelity/Stone Energy Oil and Gas Exploration Units in the MLP	Polygon	
Grand Canyon Trust	BLM	Resource Extraction	Sitla_potash_leases_MLP	3/7/2012	Yes	Sitla_Potash_Leases	State Potash Leases - SITLA	Active SITLA Potash leases within the MLP	Polygon	
Rockies Standard Oil Company	Rockies Standard Oil Company	Resource Extraction	Rockies_Standard_Oil	2014	No	MLP_1_13_2012_BLM	Moab MLP - Rockies Standard Area of Interest	Areas of Leasing Interest	Polygon	Originally submitted areas of interest were retracted and replaced with the MLP boundary
Titan Energy Resources	Titan Energy Resources	Resource Extraction	Titan_Energy_Resources	2014	No	Titan_Energy_Leasing_Exploration_Interest_Areas	Titan Energy Leasing Exploration InterestAreas	Areas of Leasing and Exploration Interest	Polygon	
BLM Request 2/26/2014-2/28/2014	BLM/CC District	Visual Resources	byways.gdb		No	Scenic_Byways	Scenic Byways/Backways	Merged scenic backways and byways	Line	
BLM Request 2/26/2014-2/28/2014	BLM/CC District	Visual Resources	New_VRI_MLP	11/30/2011	Yes	BLM_VRI_MLP	BLM Visual Resource Inventory Classes	Visual Resource Inventory - Moab FO	Polygon	
BLM via Grand Canyon Trust	BLM/CC District	Visual Resources	Vrm_mfo_mlp		No	BLM_VRM_MLP	BLM Visual Resource Management Classes	Visual resource management classes from the 2008 Moab FO RMP	Polygon	

Data Source	Credit	Category(s)	Original Layer	Date	Meta data	Database Layer	Web Layer	Description	Geometry	Notes
BLM via Grand Canyon Trust	BLM/CC District	Visual Resources	Vrm_mtfo_mlp		No	BLM_VRM_MLP	BLM Visual Resource Management Classes	Visual resource management classes from the 2008 Monticello FO RMP	Polygon	
NPCA (National Parks Conservation Association)	NPCA	Visual Resources	NPCA_ConsevationViewshe dFinal_MLPclip		No	NPCA_Conservation_Viewshed	NPCA Conservation Viewshed	Viewshed analysis generated from viewpoints in the National Parks with added major access road buffers	Polygon	
NPCA (National Parks Conservation Association)	NPCA	Visual Resources	arch_kops / cany_kops.shp		No	NCPA_Viewshed_Viewpoints	NPCA Viewshed Viewpoints	Viewpoints in Canyonlands and Arches National Parks used to generate the viewshed	Point	
BLM via Grand Canyon Trust	BLM/CC District	Wildlife	Bald_eagle_hab_mont	10/30/2008	Yes	Bald_Eagle_Habitat_MTFO	Bald Eagle Habitat - BLM MTFO	Bald Eagle habitat from Monticello FO RMP	Polygon	
BLM via Grand Canyon Trust	BLM/CC District	Wildlife	Bald_eagle_summer_hab_MLP		No	Bald_Eagle_Summer_Habitat_MFO	Bald Eagle Summer Habitat - BLM Moab FO	Summer Bald Eagle habitat clipped to MLP - Moab FO	Polygon	No metadata
BLM via Grand Canyon Trust	BLM/CC District	Wildlife	Bald_eagle_winter_hab_MLP	2003	Yes	Bald_Eagle_Winter_Habitat_MFO	Bald Eagle Modeled Winter Habitat - BLM	Vegetation Derived Winter Bald Eagle habitat clipped to MLP	Polygon	GAP Vegetation based
BLM via Grand Canyon Trust	BLM/CC District	Wildlife	bur_owl_MLP		No	Burrowing_Owl_Habitat	Modeled Burrowing Owl Habitat - BLM	Vegetation Derived Burrowing Owl habitat	Polygon	GAP Vegetation based
BLM via Grand Canyon Trust	DWR	Wildlife	deer_elk_mfo_MLP		No	Deer_Elk_WinterHabitat_MFO_BLM	Deer and Elk Winter Habitat - Moab FO BLM	Winter deer habitat Moab FO	Polygon	
BLM via Grand Canyon Trust	DWR	Wildlife	derr_mtfo_MLP	2008	Yes	Deer_CrucialHabitat_MTFO_BLM	Mule Deer Crucial Habitat - BLM MTFO	Crucial winter deer habitat Monticello FO	Polygon	

Data Source	Credit	Category(s)	Original Layer	Date	Meta data	Database Layer	Web Layer	Description	Geometry	Notes
BLM via Grand Canyon Trust	BLM/CC District	Wildlife	Desert_bighorn_lambing_rut_mfo_MLP	2005	Yes	Desert_Bighorn_Lambing_Rut_MFO_2005	Desert Bighorn Lambing/Rut - BLM MFO 2005	Desert Bighorn sheep lambing areas Moab FO	Polygon	
BLM via Grand Canyon Trust	BLM/CC District	Wildlife	Desert_bighorn_migration_mfo_MLP	2003	Yes	Desert_Bighorn_Migration_MFO_2003	Desert Bighorn Migration - BLM MFO 2003	Desert Bighorn sheep migration corridors Moab FO	Polygon	
BLM via Grand Canyon Trust	DWR	Wildlife	Desert_bighorn_mtfo_MLP	2008	Yes	Desert_Bighorn_MTF_O_RMP2008	Desert Bighorn Habitat - MTFO RMP 2008	Critical Year-long Desert Bighorn sheep habitat Monticello FO	Polygon	
BLM via Grand Canyon Trust	DWR	Wildlife	Desert_Bighorn_CrucialHabitat_DNR_20131031	10/31/2013	Yes	Desert_Bighorn_CrucialHabitat_DWR_20131031	Desert Bighorn Crucial Habitat - DWR 20131031	Crucial Desert Bighorn Sheep habitat clipped to MLP	Polygon	
BLM via Grand Canyon Trust	DWR	Wildlife	Elk_Habitat_DWR_20130408	4/8/2013	Yes	Elk_CrucialHabitat_DWR_20130408	Elk Crucial Habitat - DWR 20130408	Crucial Elk habitat	Polygon	
BLM via Grand Canyon Trust	BLM/CC District	Wildlife	fer_hawk_mfo_MLP		No	FerruginousHawk_Habitat_MFO	Ferruginous Hawk Habitat - Moab FO - BLM	Ferruginous Hawk habitat Moab FO	Polygon	No metadata
BLM via Grand Canyon Trust	BLM/CC District	Wildlife	Gun_pdog_mfo_MLP	2005	Yes	Gunnison_Prairie_Dog_Habitat_BLM	Gunnison Prairie Dog Habitat - BLM	BLM Projected Gunnison Prairie Dog Habitat Moab FO	Polygon	
BLM via Grand Canyon Trust	BLM/CC District	Wildlife	gun_pdog_mont_MLP	10/30/2008	Yes	Gunnison_Prairie_Dog_Habitat_BLM	Gunnison Prairie Dog Habitat - BLM	Gunnison Prairie Dog Habitat used in the Monticello Field Office RMP signed October, 2008	Polygon	
BLM via Grand Canyon Trust	BLM/CC District	Wildlife	Gun_sage_grouse_MLP		No	Gunnison_Sage_grouse_BLM_Habitat	Gunnison Sage grouse Modeled Habitat - BLM	No Data present- DNR Crucial Winter Habitat very small overlap with far SE corner of MLP - 50 Ac.	Polygon	
BLM via Grand Canyon Trust	BLM/CC District	Wildlife	mso_grid_model_MLP		No	Mexican_Spotted_Owl_BLM_GridModel	Mexican Spotted Owl Modeled Habitat - BLM	Mexican Spotted Owl habitat based on GAP veg or some other model? clipped to MLP	Polygon	No metadata - extensive

Data Source	Credit	Category(s)	Original Layer	Date	Meta data	Database Layer	Web Layer	Description	Geometry	Notes
BLM via Grand Canyon Trust	BLM/CC District	Wildlife	white_pd og_hab_MLP		No	WhiteTailed_Prairie_D og_Habitat_BLM	White Tailed Prairie Dog Habitat - BLM	White-tailed prairie dog habitat within the MLP	Polygon	No metadata
DWR	DWR	Wildlife	Desert_Bi ghorn_Ha bitat_TNC _DWR_Es sential_M LP		No	Desert_Bighorn_Habit at_TNC_DWR_Essenti al.shp	Desert Bighorn Critical Habitat - TNC - DWR	Desert Bighorn Critical Habitat - TNC - DWR - MLP	Polygon	
DWR	DWR	Wildlife	GUSA_occ upied201 20307	3/7/2012	Yes	Gunnison_Sage_grouse _DWR_Occupied_Cru cial_Winter_Habitat	Gunnison Sage grouse Crucial Winter Habitat - DWR	Gunnison Sage Grouse occupied habitat 20120307	Polygon	
DWR	DWR	Wildlife	GUSA_winter201203 07	3/7/2012	Yes	Gunnison_Sage_grouse _DWR_Occupied_Cru cial_Winter_Habitat	Gunnison Sage grouse Crucial Winter Habitat - DWR	Gunnison Sage grouse winter habitat 20120307	Polygon	
DWR	DWR	Wildlife	Habitat_P ronghorn	4/29/2010	Yes	Pronghorn_CrucialHab itat_DWR_20100429	Pronghorn Crucial Habitat - DWR 20100429	Utah DNR 20100429 - Value=Crucial	Polygon	
Sierra Club	DWR	Wildlife	TES_2013 0510	5/10/2013	Yes	TES_20130510	TES occurrences per 24K USGS Quadrangle 20130510	TES Species by USGS 24k Quadrangle	Polygon	
TNC (The Nature Conservancy)	USFWS	Wildlife	fish_moab _MLP	2003	Yes	Colorado_pikeminnow _Razorback_sucker_Cr iticalHabitat_USFWS_ 2003	Colorado pikeminnow/Razorback sucker Habitat	Federally Designated Critical Habitat For the Colorado River Basin Endangered Fish Moab FO	Polygon	
TNC (The Nature Conservancy)	USFWS	Wildlife	fish_mont _MLP	10/30/200 8	Yes	Colorado_pikeminnow _Razorback_sucker_Cr iticalHabitat_USFWS_ 2003	Colorado pikeminnow/Razorback sucker Habitat	Critical Fish Habitat used in the Monticello Field Office RMP signed October, 2008	Polygon	
TNC (The Nature Conservancy)	USFWS	Wildlife	MexicanS potted_O wl_Critical Habitat_T NC		Yes	MexicanSpotted_Owl_ CriticalHabitat_USFWS _TNC	Mexican Spotted Owl Critical Habitat - USFWS - TNC	USFWS critical Mexican Spotted Owl habitat	Polygon	
TNC (The Nature Conservancy)	TNC	Wildlife	highdensit y		No	TNC_HighDensityOccu rences_RarePlants_An imals	High Density Occurences of Rare Plants and Animals	High density occurrence of Rare Plants and Animals	Polygon	PDF Reference - No Metadata